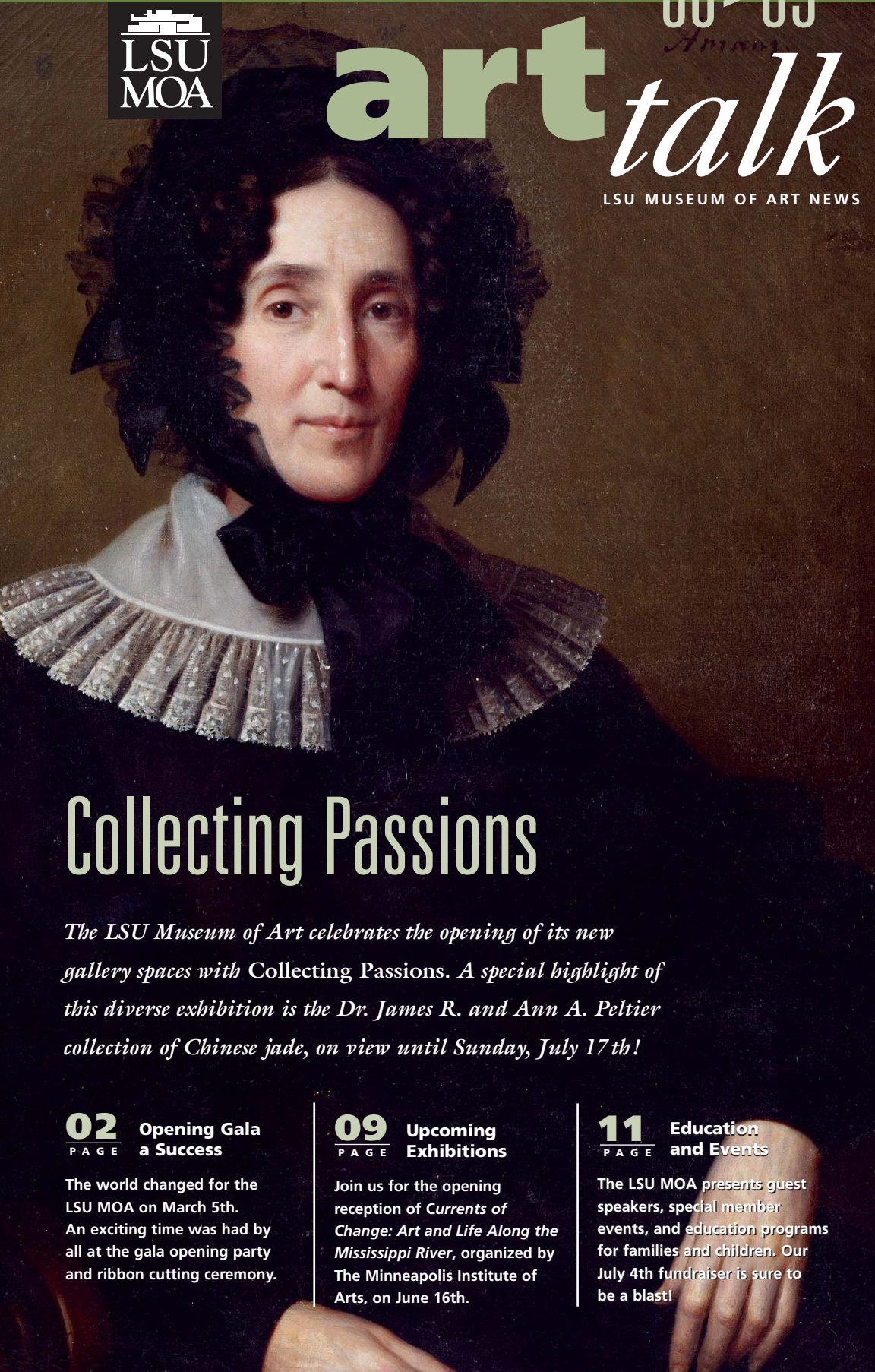




art *talk*

LSU MUSEUM OF ART NEWS



Collecting Passions

The LSU Museum of Art celebrates the opening of its new gallery spaces with Collecting Passions. A special highlight of this diverse exhibition is the Dr. James R. and Ann A. Peltier collection of Chinese jade, on view until Sunday, July 17th!

02 Opening Gala PAGE a Success

The world changed for the LSU MOA on March 5th. An exciting time was had by all at the gala opening party and ribbon cutting ceremony.

09 Upcoming PAGE Exhibitions

Join us for the opening reception of *Currents of Change: Art and Life Along the Mississippi River*, organized by The Minneapolis Institute of Arts, on June 16th.

11 Education PAGE and Events

The LSU MOA presents guest speakers, special member events, and education programs for families and children. Our July 4th fundraiser is sure to be a blast!

Cover: **Jacques Guillaume Lucien Amans** (Franco-American, 1801–88), *Portrait of a Gentlewoman*, (detail), c. 1840–45. Oil on canvas, Gift of Mr. and Mrs. W.E. Groves, 60.2.1

Opening gala a smashing success!

ON MARCH 5, 2005 THE WORLD changed for the LSU Museum of Art. A “town and gown” alliance was born that gave testimony to the foresight and commitment of LSU MOA board members, community leaders, and LSU.

It was our dream to recognize the passion of our donors and collectors through our inaugural exhibition. The amazing team that made *Collecting Passions* come to fruition worked under the leadership of our talented deputy director, Dr. Donna McAlear. Using the recommendations of guest scholars who assessed each area of the collection, they presented selections from the LSU art collection using exhilarating color and design, involving our sister museums on the LSU campus, and encouraging creative community engagement. The support and involvement of community collectors – from Kip Holden to Eric Monday to Mary Landrieu – made this a very special experience.

To Paula Garvey Manship, we express not only our gratitude for her love of the arts and her generous spirit, but also for her confidence, financial and personal commitment, and continued dedication.

As the pictures on these pages demonstrate, the dream has come true.

Laura F. Lindsay
Interim Executive Director



1.



2.



3.



4.



5.



6.



7.



8.



9.



10.

1. James Bernhard, The Shaw Group founder and CEO, addresses the gala audience. LSU System President Bill Jenkins; Manship Theatre Board of Directors Chair Paul West; Shaw Center for the Arts Board of Directors Chair Charles Lamar; and Mayor Kip Holden also pictured.

2. Jay Jalenak, Christel Slaughter, community art activists with Davis Rhorer, executive director of Downtown Development District.

3. Mr. Alfred C. Glassell, Jr. converses with Peggy and Bill Jenkins.

4. Mr. J.D. Lyle and Dr. and Mrs. James Peltier viewing the Peltier's collection of Chinese jade showcased at the opening.

5. LSU Chancellor Sean O'Keefe addresses the crowd.

6. Governor Kathleen Blanco; Angelle Davis, Secretary for the La. Office of Culture, Recreation, and Tourism; and Baton Rouge Mayor Kip Holden.

7. Berenice Garvey Haas and Nadine Carter Russell Gallery opening night, *African Gold: Selections from the Glassell Collection, The Museum of Fine Arts, Houston*. Frances Marzio, Exhibition Curator; Nadine Carter Russell; Peter Marzio, Director of the Museum of Fine Arts, Houston; and Mr. and Mrs. Alfred C. Glassell, Jr.

8. Sue Turner, chair of the LSU Museum of Art Advisory Board, and Laura Lindsay.

9. Moo Svendsen, Susan Turner, Amanda Purdin, and Adele Abboud, in the Bert and Sue Turner Gallery opening night.

10. David Greenland; Risa Palm, LSU Provost; Dan Fogel, University of Vermont President; and Rachel Kahn-Fogel.



We've Moved!

LAURA F. LINDSAY

When the *USA Today* article, “Regional museums frame world-class art,” appeared in the April 15th weekend edition at hotel doors all over the country, the reality and immensity of the LSU Museum of Art’s move from the Memorial Tower to the Shaw Center for the Arts struck home. We found ourselves partnered with other fabulous art and architecture projects: the Walker Art Center in Minneapolis, the Indianapolis Museum of Art, the Fred Jones Museum of Art in Norman, Oklahoma, and the Figge Art Museum in Davenport, Iowa. Recently, we learned that the museum will be featured in the June edition of the *Architectural Record*.

After more than seven years of design concept and development that has involved one change in venue, eight master plan options, and the input of more than thirty

public and private participants, the museum opened its doors in the new Shaw Center for the Arts on March 5, 2005. What began as an individual project to create a new LSU Museum of Art on the fringes of the campus grew into a true, community-wide endeavor. From master planning to schematic design, and from building development to building expression, the LSU Museum of Art has evolved to serve an important role as a partner with the LSU School of Art and the Douglas L. Manship Sr. Theatre in the Shaw Center for the Arts.

The inspiration provided by the Mississippi River is everywhere. The translucent, shimmering reflections of the building’s unique, channel-glass facade seem to move and flow like the river it mirrors. The panoramic window that stretches the length of the museum lobby and welcomes visitors to the LSU Museum of Art galleries offers a

living, ever-changing backdrop to top-tier permanent collection, traveling, and in-house exhibitions.

So start marking your calendars. Along with the museum’s ongoing exhibitions and related programs, our partners in the Shaw Center – Baton Rouge Symphony, LSU School of Art, Manship Theatre, Arts Council of Greater Baton Rouge, Brunner Gallery and Tsunami – provide endless possibilities for additional collaborative programs and activities.

On May 14th the Shaw Center for the Arts initiated *Second Saturdays*. The Tamizey Drum and Dance Company performed social music from Ghana, West Africa, as a complement to the exhibition, *African Gold: Selections from the Glassell Collection, Museum of Fine Arts, Houston*. In the Hibernia Gallery, where the museum’s seventeenth- to nineteenth-century American and British portrait collections are on view, local artists taught visitors the art of portraiture using collection portraits as their models, a successful event we will repeat.

Our first major fundraiser will be held on Friday, the 4th of July. Watch the fireworks on the Mississippi River levee from the best seat in town – the museum’s Irene W. Pennington Rooftop Terrace and Sculpture Garden at the Shaw Center for the Arts. Feast on delectable treats by Tsunami and visit with the recently appointed LSU Chancellor, Sean O’Keefe.

On Thursday, July 7th the LSU Museum of Art partners with the Baton Rouge Symphony to host *River Views and Vibes* on the first Thursday of each month in the fifth floor galleries. Relax with us after work from 5:00 p.m. to 8:00 p.m. to browse the galleries with friends and enjoy a glass of wine

from Tsunami.

Join us on Thursday, June 16th to celebrate the opening of our next visiting exhibition, *Currents of Change: Art and Life Along the Mississippi River, 1850–1861*, organized by The Minneapolis Institute of Arts. This exhibition features fine and decorative arts that reflect the mid-nineteenth-century prosperity of the pre-Civil War river cities when the Mississippi River fostered abundant northern and southern trade. The works are on loan from many outstanding museums and private collections, and an acclaimed guest speaker program complements the exhibition from June to September.

And this is only the beginning. Many exciting activities are described in the LSU Museum of Art’s first edition of *Art Talk*. We hope you will enjoy reading about them, and we look forward to seeing you at the museum!

LSU Museum of Art / Shaw Center for the Arts Team

Design Architects: Schwartz/Silver, Boston, MA

Project Team: Warren R. Schwartz, FAIA; Christopher Ingersoll, AIA; Philip Chen, AIA; and Richard Lee

In association with the Louisiana firms of: Eskew + Dumez + Ripple, New Orleans
Jerry M. Campbell & Associates, Baton Rouge

General Contractor: Lemoine Construction Company, Lafayette, LA

Landscape Architects: Hargreaves Associates, Cambridge, MA

Theatre Consultants: Theatre Projects Consultants, South Norwalk, CT

Structural Engineers: M&E Consulting, Inc., Lafayette, LA

Civil Engineers: Ferris Engineers, Baton Rouge, LA

Acoustical Consultants: Acentech, Cambridge, MA

Lighting Designer: Brandston Partnership, New York, NY



collecting

Collecting is a vice that brooks no competition from other vices. It is a passion that grows and dominates until you stand trembling before the object of your desire, determined to own it at all costs while earnestly striving to conceal your cupidity lest it affect the price.

William E. Groves (Martin and Margaret Wiesendanger, *19th Century Louisiana Painters and Paintings* from the Collection of W. E. Groves (New Orleans: The W. E. Groves Gallery, 1971)

passions

**Collecting Passions:
Highlights from the LSU
Museum of Art Collection**

Organized by the LSU Museum of Art
Ongoing through 2005

Collecting Passions celebrates the March 2005 opening of the new Louisiana State University Museum of Art at the Shaw Center for the Arts. The museum's permanent collection covers an intriguing range of disciplines and historical periods, from British, American and Louisiana paintings (portraits, landscapes and marine scenes) to decorative arts (New Orleans silver, Chinese jade, Creole furniture, and Newcomb pottery and crafts). This exhibition charts how the museum's expansion in recent decades of its early collecting mandate as the Anglo-

American Art Museum (1959), and its name change to LSU MOA in 1992, were spurred by the collecting passions of new generations of curators and donors.

The exhibition is accompanied by a case-bound, illustrated, 160-page color catalogue edited by Dr. Donna McAlear, deputy director of LSU MOA. It includes eleven thematic essays by international scholars such as Dr. Barbara Dayer Gallati, Brooklyn Museum, New York, and Dr. Jesse Poesch, Tulane University, New Orleans. The book is available in the LSU MOA Museum Store for \$34.95. Contact LeAnn Russo, Museum Store Manager at 225.389.7210; lrusso@lsu.edu.

William Hogarth
(English, 1697–1764), *Portrait of a Lady*,
c. 1740, oil on canvas, Anonymous
Donor's Purchase Fund, 59.2.2

CHINESE JADE



Chinese Jade: The James R. and Ann A. Peltier Collection

Organized by the LSU Museum of Art

Ongoing until Sunday, July 17, 2005

A highlight of *Collecting Passions* is the Chinese jade exhibition featuring works gifted to the museum by Dr. James R. and Ann A. Peltier. The Peltier collection is comprised mostly of jades from the Qing dynasty (1644–1911), a period of prolific and high quality carving. Jade's virtue held much appeal for Emperor Qianlong (1736–95), who made a significant contribution to the development of jade carving and remains the greatest patron and collector of jade in Chinese history. The provenance of one Peltier jade, the Imperial dragon-headed *rhyton*, can be traced to the Imperial Palace collection (1912–19). The *rhyton* is associated with Daoism in its ritual function

as a vessel from which the elixir of immortality is consumed. Inscribed on the *rhyton* is a saying related to the veneration of sons: "Equal to the times dragons penetrate the depths of Heaven and Earth, may generations of sons and grandsons use and cherish this cup for myriads of ages." Many other treasures rich with symbolic wishes for longevity, good fortune and wealth await visitors to the exquisite Peltier collection of Chinese jade.

Imperial dragon-headed *rhyton* with nine *quilon* (immature dragons), Qing dynasty, Qianlong reign, 1736–95, nephrite, Gift of Dr. James R. and Ann A. Peltier, 2003.9.4

currents of change



Currents of Change: Art and Life Along the Mississippi River, 1850–1861

Organized and circulated by

The Minneapolis Institute of Arts

June 16 to September 18, 2005

OPENING RECEPTION: Thursday, June 16

MEMBERS PREVIEW: 6:30 P.M. TO 7:30 P.M.

PUBLIC RECEPTION: 7:30 P.M.

Currents of Change explores life and culture along the Mississippi River through fine and decorative arts produced during the 1850s, a dramatic time in the development of America. The nation was undergoing extraordinary and massive changes: from the

steamboat era to the advent of the railroad, from a mostly agrarian economy to the beginnings of the Industrial Revolution, from a nation of youthful optimism to one that would soon erupt into civil war. The economy of the Mississippi Valley – lumber and flour milling, lead production, and sugar and cotton processing – gave rise to the great cities along the river that we know today and financed the demand for sophisticated furnishings and a refined life.

CONTINUED NEXT PAGE

Hippolyte Sebron (1801–79),
Giant Steamboats of New Orleans, 1853, oil on canvas,
Collection of Tulane University, New Orleans,
Gift of D.H. Holmes Company, New Orleans

The Mississippi, which had long been a channel for trade, was becoming an important conduit for ideas about art, culture and design.

Currents of Change includes seldom-seen objects from numerous museums, historical societies and private collections in the southern Mississippi River valley. Included is Marie Adrien Persac's 1858 watercolor, *Norman's Chart of the Lower Mississippi River*, from a private collection, and Persac's 1861 gouache and collage, *Interior of Main Cabin of the Steamboat Princess/Imperial*, from the LSU Museum of Art collection. The latter is the only known, pre-Civil War painting of a Mississippi River steamboat interior, and it depicts in minute detail the elegance and luxury of the steamboat's Gothic Revival-style interior. Hippolyte Sebron's 1853 oil painting, *Giant Steamboats of New Orleans*, from the Tulane University collection, also captures the pre-Civil War prosperity of the south. Crewman load and unload cargo from a string of steamboats at the wharf while other steamboats depart up river.

Additional *Currents of Change* highlights include a rare collection of sheet music from the John Hay Library, Brown University, and a Grecian-style, mahogany and walnut bed manufactured by Charles Lee of Manchester, Massachusetts in 1860, on loan from the Natchez National Historical Park, Melrose. Lee foresaw the approaching demand for Grecian-style bedroom furniture

in cities located along the Mississippi River and began shipping his highly regarded furniture aboard the cargo ships that transported cotton from the south to Boston and New York. Nearly every plantation in the Natchez region contained a bed similar to the one featured in this exhibition.

One of the many special items in the exhibition is a cotton quilt made by Susan Robb of Arkansas in 1861 from the Museum of Texas Tech University collection. The quilt is covered with appliqué patterns of Confederate soldiers and flags, and a pelican, which was the symbol of Louisiana and the Confederate South.

Works in the exhibition are on loan from the LSU Museum of Art (Baton Rouge), Tulane University (New Orleans), The Historic New Orleans Collection, New Orleans Notarial Archives, Louisiana State Museum (New Orleans), Mississippi River Museum (Memphis), Museum of Fine Arts, Houston, New Orleans Museum of Art, Natchez National Historical Park (Melrose), Museum of Texas Tech University (Lubbock), and Stanton Hall, Pilgrimage Garden Club (Natchez).

The exhibition is accompanied by an illustrated, color catalogue that includes three thematic essays, on sale in the LSU MOA Museum Store.

Education

Summer Sunday Speaker Programs

Exhibition tour with Jason T. Busch, The Minneapolis Institute of Arts (MIA), Co-Curator, *Currents of Change*

Sunday, June 19, 2 to 3:30 pm
Free with museum admission.
Location: LSU MOA, fifth floor, Shaw Center for the Arts

Jason T. Busch, Assistant Curator of Architecture, Design, Decorative Arts, Craft and Sculpture, MIA, will offer visitors an intimate glimpse of the exhibition's theme and its contents. Busch, the co-curator of *Currents of Change*, has lectured and published on the decorative arts and culture of the lower Mississippi since the 1990s, and holds a Master of Arts in early American culture from the Winterthur Program, the University of Delaware.

Guest speaker: Jim Fraiser, author of *The Majesty of the Mississippi Delta* (2002)

Sunday, July 17, 2 to 3:30 pm
Free with museum admission.
Location: LSU MOA, fifth floor, Shaw Center for the Arts

In conjunction with the *Currents of Change* exhibition, writer Jim Fraiser will read from his writings about the Mississippi River and the Deep South. Fraiser's recent book, *The Majesty of the Mississippi Delta*, charts the fascinating architectural history of the 200-mile-long and 52-mile-wide plain known as the Mississippi Delta region. Fraiser, former Assistant Attorney General, Mississippi Civil Litigation Division, is a lawyer, actor, teacher and editor who resides in Jackson, Mississippi.

Educational Programs

**Second Saturdays at Shaw
June 11, July 9 & August 13,
10:00 am to 2:00 pm**

Join the LSU Museum of Art and all its Shaw Center for the Arts partners for four, fun hours with the arts! The whole center will be bustling with professional artists and your artists in training. LSU MOA has a variety of events planned to give families the chance to see art and be a part of artmaking. Mark your calendars and plan to spend your Second Saturdays at the Shaw this summer.

**Sunday Family Workshops at LSU MOA
June 19, July 17 & August 21,
2 to 3:30 pm**

The whole family will love looking at and making art together. Workshops are free with paid museum admissions. Supplies are available on a first-come, first-served basis. Children must be accompanied by an adult.

**Painted Plates
Sunday, June 19, 2 to 3:30 pm**

The artists of the Newcomb Pottery and Crafts movement are renowned for the colors they used and the designs and scenes they painted. Tour the Newcomb pottery and crafts gallery in the *Collecting Passions* exhibition. Then, create your own painted plate à la Newcomb.

**Fantastic Fans
Sunday, July 17, 2 to 3:30 pm**

Artists have decorated things we use forever, making them beautiful and functional, too. After touring the *Currents of Change* exhibition, you will embellish a hand fan, making it FANTastic.

**Contemporary Carvings
Sunday, August 21,
2 to 3:30 pm**

Visit the contemporary stone carvings in the Inuit sculpture gallery and learn how these gifted artists create their striking sculptures. Families will have a chance to scrape, chisel, and carve their own contemporary sculpture.

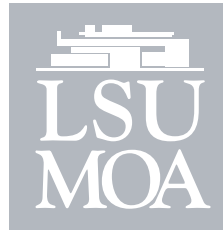
It's All About the Drama

Campers from Baton Rouge are acting their way through the LSU MOA galleries this summer. Teen volunteers have been trained by LSU theater students to use drama as a way to engage youth with the visual art on display in the museum's galleries.

Teens act out the artworks for campers, and then mentor the campers so they can add some drama to their lives. Props add to the fun. Campers create conversations between two British portrait sitters. They become Newcomb pots in the making. Their imaginations take them into living the life of a pre-electric lighting device at a time before electricity. Teen actors are working under the direction of two, gifted drama coaches, Shawn Halliday and Michelle McCoy. They graduated this spring from LSU with a Master of Fine Arts in Theatre.

This program is supported in part by the City of Baton Rouge/Parish of East Baton Rouge.

For information about any of the museum's education programs, contact Lara Gautreau, Education Curator, 225.389.7207; lgaut@lsu.edu.



Make Your Move. Join the LSU Museum of Art Today!

Annual membership in the LSU Museum of Art provides major support for museum exhibitions, educational programs, and the research, conservation and expansion of the permanent collection.

In addition to the many benefits and privileges you will receive as a member of the LSU Museum of Art, you will have the pride and satisfaction of knowing that you are contributing to the growth and development of Baton Rouge's premiere fine and decorative arts museum.

Join LSU MOA Expect to be moved

All members receive free admission to the museum, a 10% discount in the Museum Store, a complimentary quarterly newsletter, and an LSU MOA lapel pin.

Membership Levels and Benefits

All memberships include the benefits outlined above, and those indicated by the levels below:

Student \$15

Single student membership (with verification of full-time enrollment).

Individual \$40

Membership for one adult.

Dual/Family \$60

Membership for up to two adults, and children under 18.

Patron \$100

Dual/Family benefits plus invitations to special receptions and events, and four guest passes.

Sustaining \$250

Patron benefits plus one gift from the Museum Store and an invitation to a behind-the-scenes tour of the museum.

Benefactor \$500

Sustaining benefits plus complimentary exhibition catalogues, and invitations to opening receptions of all major exhibitions.

Corporate Benefactor \$5000

Dual/Family memberships for five adults, corporate recognition in the museum's quarterly newsletter, and invitations to opening receptions of all major exhibitions.

Corporate Philanthropist \$10,000

Dual/Family memberships for ten adults, corporate recognition in the museum's quarterly newsletter, and invitations to opening receptions of all major exhibitions.

LSU faculty and staff receive a 10% discount on the above membership levels, and a 10% discount in the Museum Store.

ExxonMobil and LSU . . . A Winning Team!

Over the years, your spirit of giving has made LSU the #1 recipient university for matching funds from ExxonMobil. Now is

the best time to support the LSU Museum of Art for members of the ExxonMobil/LSU family.

ExxonMobil Giving Opportunities: Increased Support

ExxonMobil recently raised its maximum annual limit on matching donations to \$7,500. An additional \$2,500 of your annual philanthropic giving to the LSU Museum of Art will be matched.

Your Gift Makes a Significant Impact

ExxonMobil's generous 3 to 1 match for employee contributions to LSU assures that your museum gift makes a significant impact. For example, a gift of \$250 dollars, plus the ExxonMobil match, totals \$1,000 to the LSU Museum of Art Endowment Society.

By utilizing the ExxonMobil match, your donation of \$5,000 will become a gift of \$20,000, qualifying for a naming opportunity in the museum. What a wonderful way to honor an individual or family who wants to make a major contribution to the arts.

For more information, contact Kelly Lastrapes, Director of Development at 225.389.7212; klast@lsu.edu.

MOA News

Staff News



Renee' L. Bourgeois
Events
Coordinator

Renee' L. Bourgeois joins the LSU

Museum of Art as the Events Coordinator. She graduated from LSU with a degree in fashion merchandising and earned her Master of Arts in organizational management from the University of Phoenix. Renee' worked for fifteen years in retail management. She joins the museum after five years as the community director of the March of Dimes where she coordinated annual events such as the Livingston Parish *WalkAmerica*, the Real Estate Award Luncheon, and the Antique Show & Sale. Renee' is excited about joining the museum and continuing her work with community leaders and volunteers. She looks forward to being a part of the tremendous growth of the LSU Museum of Art.



Tiffany Hess,
Receptionist

Tiffany Hess joins the LSU Museum of Art as receptionist. She brings a breadth of administrative, public relations, and volunteer experience, having worked for several local non-profit organizations. Tiffany served as secretary for the Muscular Dystrophy Association, membership manager for the Friends of Louisiana Public Broadcasting, and grantmaking assistant for the Baton Rouge Area Foundation. Tiffany, an active member of Forum 35, thinks the Shaw Center for the Arts is a great addition to downtown Baton Rouge.



LeAnn Russo,
Museum Store
Manager

LeAnn Russo joins the LSU MOA family as the Museum

Store manager. She graduated from LSU in 1986 with a degree in fashion merchandising. LeAnn was a stay-at-home mom with her 11-year-old twins, Anthony and Alexandra. LeAnn brings nine years of retail management experience in merchandising, customer service, and retail staff supervision to this position. Prior to joining us, she held a senior position at Stein Mart.



Jacob Balfantz,
Student Intern

Jacob Balfantz, a graduate of St. Amant High School and a

Bachelor of Visual Arts major at Southeastern Louisiana University, joins the museum this summer. Jacob's internship placement offers him a range of art museum work experience, a requirement of his Cultural Resources Management program at SELU's College of Arts and Sciences. Jacob is a history major, artist, and graphic designer. He also brings five years of work experience in customer service, retail, and tourism to the museum. Jason serves on the Ascension Parish Board of Tourism.

Museum Store Retail Team

Visitors to the LSU MOA Museum Store will be greeted by a new team of part-time retail staff. The museum is delighted to welcome LSU students Danelle Augustin (law and art history), Betty Daigle (human resource management), and Jennifer Dobrowski (fine arts).

Professional and Community Networking

American Association of Museums Annual Conference, May 2005

Lara Gautreau, education curator, represented the LSU Museum of Art at the national conference of the American Association of Museums in Indianapolis. This annual conference hosted over 4,000 attendees, attracting every segment of the museum industry. Lara attended a variety of educational sessions, including: working with docents, building partnerships with schools, and new research on how a person's memory influences their engagement with museum displays.

Lara's attendance at this important conference was supported in part by funds from the Louisiana State Arts Council and the Louisiana Division of the Arts, and the Arts Council of Greater Baton Rouge through the Decentralized Arts Funding Program.



LSU MOA Endowment Society News

The LSU Museum of Art Endowment Society raised \$135,000 in 2004, the largest amount raised annually since the society was formed in 1999. With a record number of 2004 memberships, the society is more than half way towards meeting its \$1 million goal. Susan Lipsey, Chair of the Endowment Society, kicked off this year's campaign with the LSU Museum of Art Endowment Society Renewal and Appreciation Social on Thursday, May 26th in the Bert and Sue Turner Gallery

on the Charles Phelps Manship Jr. Floor. Endowment Society members conversed with museum staff and visited the exhibition, *African Gold: Selections from the Glassell Collection, The Museum of Fine Arts, Houston*, during its final week and before it travels to the Museum of Fine Arts, Boston.

The Endowment Society annual membership is \$1000. Members receive Benefactor level benefits, an invitation for two to the annual Endowment Society Party, and recognition on the LSU MOA Endowment Society Wall of Donors on the Paula Garvey Manship Floor.

Susan Lipsey is thrilled to announce that the 2005 Endowment Society Party will be graciously hosted by Dana and Jim Bernhard at their Highland Road home on Thursday, October 6, 2005.

LSU MOA and Tourism Outreach

Will Mangham, director of marketing, is busy promoting the museum by welcoming tourism professionals to the Shaw Center for the Arts and spreading the word about the fabulous new LSU Museum of Art and its programs at tourism conferences. Will has represented the museum at the state-wide Tourism Summit, Shreveport (January), the Travel South Showcase, Memphis (February), National Tourism Awareness Day at the State Capital, Baton Rouge (May), and the monthly meeting of the Baton Rouge Hospitality Sales Association (May). On June 16th, the museum will host a special catered dinner for board members of the Louisiana Travel Promotion Association in the Bert and Sue Turner Gallery. Following the dinner, our guests will join the public opening reception of

Currents of Change: Art and Life Along the Mississippi River, 1850-1861.

Art Melt, Forum 35, July 2005

Donna McAlear, deputy director, will serve as a jury member for the second annual *Art Melt*, a juried art exhibition organized by Forum 35. Forum 35 is a non-profit group of young professionals who generate events focused on downtown development. The first *Art Melt* was held last summer in a downtown Baton Rouge warehouse. The event drew submissions from many local and regional emerging artists. It attracted over 800 visitors, illustrating the desire for Baton Rouge art audiences to see new contemporary art. Donna will work with fellow jurors C.C. Lockwood, Baton Rouge photographer, and Tracy Kennan, Curator of Public Programs, New Orleans Museum of Art, to select the artwork. *Art Melt* opens on July 15th at the Brunner Gallery in the Shaw Center for the Arts. For more information about *Art Melt*, contact Tiffany Hess, receptionist: 225.389.7203; thess@lsu.edu.

Baton Rouge Symphony Partnership with LSU MOA



Join us for *River Views and Vibes* on the Paula Garvey Manship floor (5th) at the LSU Museum of Art the first Thursday of each month. Starting on Thursday, July 7th, the LSU MOA and the Baton Rouge Symphony will launch the first of many co-sponsored, after-five events for downtown professionals who seek some culture with their relaxation and cocktails after work. Light appetizers and drinks will be available for guests while they tour the

exhibitions and enjoy the music. Admission: \$10.

New I-10 Corridor University Art Museum Network

The LSU Museum of Art, The Ogden Museum of Southern Art, New Orleans, and the Paul and LuLu Hilliard University Art Museum, Lafayette, are working together as the "I-10 Corridor Cultural Coalition" to further partnerships that arise because of their unique role as public university art museums. To acknowledge this partnership, the universities are participating in a cooperative agreement that encourages information exchange, cost-sharing, cross-marketing, and other collaborations that will enhance institutional effectiveness and outreach.

Programs & Tours

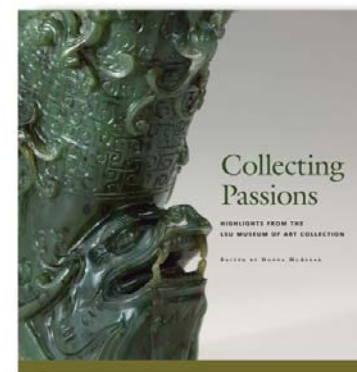
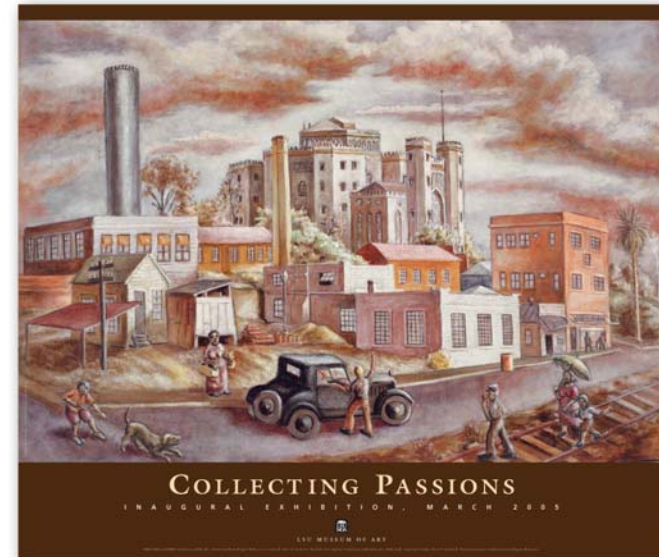
LSU MOA presents a range of adult and family programs and special weekend workshops for children. Groups are welcome by appointment. Call Lara Gautreau, Education Curator at 225.389.7207 or visit the museum website www.lsu.edu/lsumoa.

Dining

The Shaw Center for the Arts offers three dining destinations. Tsunami (225.346.5100) on the Irene W. Pennington Rooftop Terrace blends unique cocktails and Asian-fusion dining with spectacular interior and outdoor views of the Mississippi River. Capital City Grill on beautiful Lafayette Park is a classic American eatery. PJ's Coffee House and Wine Bar on Lafayette and Convention Streets is a relaxing place for light dining.

Museum Store

The LSU MOA Museum Store sells an array of boutique gifts for all family members, and exclusive jewelry, glass, ceramics, sculpture, and furniture by regional artisans.



Grand Opening Exhibition Book

Collecting Passions: Highlights from the LSU Museum of Art Collection

Hard-back, 160-page book celebrates the opening of the new LSU Museum of Art at the Shaw Center for the Arts. Beautiful, full-color photographs by David Humphreys illustrate the regional, national, and international collections of the museum. The book captures the essence of the museum's unique collection by considering its major artworks, key donors, and diverse themes. Price: \$34.95

In the Museum Store

LSU Museum of Art Merchandise

Show your support for the LSU Museum of Art by wearing our signature merchandise. LSU MOA t-shirt, \$17.95; vinyl tote bag, \$22.95; caps, \$13.95; and nylon backpacks, \$3.95

Special Offer! Receive a free LSU MOA can coozie with the purchase of any LSU MOA t-shirt, cap, tote bag, or backpack.

Inaugural Poster

Capture a piece of Baton Rouge history in the reproduction of Ben Earl Looney's (American, 1904-81) painting of downtown in the 1920s. The painting, oil on canvas, features the same corner where the Shaw Center for the Arts now stands 85 years later. Price: \$14.95



4th of July fundraiser

JOIN US FOR FOOD, FUN
& FIREWORKS WITH FRIENDS!



Help us launch LSU's new Chancellor, Sean O'Keefe, while you watch fireworks on the levee from the best seat in town!

Dine on a variety of sensational creations by the renowned chefs of Tsunami!

Enjoy the museum's new feature exhibition, *Currents of Change: Art and Life Along the Mississippi River, 1850-1861*, organized by The Minneapolis Institute of Arts.

Irene W. Pennington Rooftop Terrace Monday, July 4, 2005, 6 to 10 pm

Tickets

\$150 each (adults only)
All proceeds support the
LSU Museum of Art
education programs.

For information and to
purchase your tickets,
contact Kelly Lastrapes,
Director of Development,
by phone or e-mail:
225.389.7212; klast@lsu.edu.

Rent LSU MOA Spaces for Special Business and Social Events

Designed to take full advantage of its magnificent location overlooking the Mississippi River, the LSU Museum of Art offers unique settings for special business and social events. A number of spaces are available for private events and corporate galas.

Renee' L. Bourgeois, Events Coordinator, will be happy to provide you with more information about the museum's rental spaces, offer you a tour of the facilities, and assist you with planning your distinctive event. Contact Renee' by phone or by e-mail: **225.389.7206**; renee@lsu.edu.

LSU MOA Staff

Laura F. Lindsay, Executive Director
Donna G. McAlear, Deputy Director
Becky Adams, Administrator
Tiffany Hess, Receptionist
Michael D. Robinson, Senior
Director of Development
Kelly Lastrapes,
Director of Development
Will G. Mangham,
Director of Marketing
Renee' L. Bourgeois,
Events Coordinator
Mary Schoen, Public
Relations Coordinator
Lara Gautreau, Education Curator
Frances R. Huber, Registrar
Bobbie F. Young, Assistant Registrar
Nathaniel Lakin, Preparator
LeAnn Russo, Museum Store Manager

Board Members

Chair: Sue Turner
Linda Bowsher
Laura W. Boyce
Mary Frey Eaton
Natalie Fielding
Ashley Fox-Smith
Phillip Juban
Cornelius Lewis
Susan H. Lipsey
Paul Murrill
Michael D. Robinson
Jerry Schwing
Adele Silver
Kristin Sosnowsky
Rob Stuart
Boo Thomas
Leonard Wyatt
Honorary:
Nadine Carter Russell
Paula Garvey Manship
Ex-Officio: Laura F. Lindsay

Admission

Adults: \$ 8, Seniors 65+
and students with I.D.: \$ 6
LSU faculty/staff with I.D.: \$ 6
Children 5 to 17: \$ 4
Children under 5: Free

Hours

Tuesday to Saturday:
10:00 am to 5:00 pm
Thursday: 10:00 am to 8:00 pm
Sunday: 1:00 pm to 5:00 pm
Closed Mondays, Easter Sunday,
Thanksgiving Day, Christmas Eve,
Christmas Day and New Year's Day.



LSU Museum of Art Shaw Center for the Arts

100 Lafayette Street
Baton Rouge, LA 70801

225.389.7200 (general)
225.389.7210 (Museum Store)
Internet: www.lsu.edu/lsumoa