

arttalk



- FEATURE EVENT 3**
LSU Art: Past and Present
- EXHIBITIONS 4+**
3 New LSU Museum of Art Acquisitions
- YOUNG PROFESSIONALS 7**
Third Thursdays
Ed Pramuk comes to LSU MOA
- CALENDAR 8+**
Events, Lectures, and Films

On view through
NOVEMBER 30
AMERICAN MASTERS FROM THE
BLANTON MUSEUM OF ART'S MARI
AND JAMES A. MICHENER COLLECTION

ROBERT INDIANA (American, b. 1928),
Highball on the Redball Manifest
(detail), 1963. Oil on canvas,
60 x 50 in. Blanton Museum of Art,
The University of Texas at Austin,
Gift of Mari and James A. Michener,
1991.243. Photo: Rick Hall.

Director's Message



THE GREAT AMERICAN ARTIST EDWARD HOPPER ONCE FAMOUSLY DECLARED, "IF YOU COULD SAY IT IN WORDS THERE'D BE NO REASON TO PAINT."

What Hopper was referring to, of course, was the ability of art to present a visual language of its own. Even better, that visual language is largely dependent upon the viewer to interpret and read. What one person sees in a painting may or may not be similar to another's view. Each of us brings our individual history to the moment when we look at a work of art and it resonates to our being.

In the next few months the LSU Museum of Art will be presenting a lot to visually enjoy and to interpret. *American Masters from the Blanton Museum of Art's Mari and James A. Michener Collection* remains up through November 30 and presents an opportunity to see—and read—the work of some of the best artists of the twentieth century. The divergent talents of John Sloan, Robert Indiana, Kenneth Noland, and dozens more are all available for viewing. Michener had a great eye for art and, together with his wife, Mari, selected extraordinary examples. Forty-two paintings from his collection of more than 300 have been chosen for this show, each one worthy of a visit.

At the same time we will be shifting our permanent gallery space for the first time since the Museum opened in 2005. The Newcomb College material that has been housed in the Louisiana Machinery Gallery will be moved and reinstalled elsewhere on the fifth floor. In its place will be an exhibition of work from LSU faculty and students, past and present, and even a few artists in residence who hung their brushes at the university for a semester or two. The Newcomb work remains crucial, but we felt it was important to showcase the work from LSU on a rotating basis. Not only does the work deserve to be seen, it presents some exciting visual treats. Work by contemporary artists Robert Hausey, Michael Crespo, and Kelli Scott Kelley will be side by side with other great LSU representatives such as Caroline Durieux, Paul Dufour, and Armin Scheler.

The works of art created by artists from and currently with the university are more than worthy to be seen and interpreted by the public. Each has a message that defies words but challenges us with new meanings through the beauty of visual language.

Thomas A. Livesay
Executive Director
LSU Museum of Art

"...it presents some exciting visual treats."

Feature Event

LSU Art: Past and Present

Opening September 5, 6pm-8pm

On September 5, the LSU Museum of Art will open *LSU Art: Past and Present*, a new museum space dedicated to a rotating display of work by LSU art professors and their students. The exhibitions in this gallery will change once or twice each year to feature works of the painters, sculptors, ceramicists, and printmakers of LSU, from the permanent collection as well as those on loan to the museum. The exhibitions will be thematic and works will be chosen to reflect aesthetic concerns, often combining work of both past and present faculty members and students.

The first such exhibition will feature the prints of past professors Paul Dufour and Caroline Durieux, the sculpture of Armin Scheler and Duncan Ferguson, as well as paintings by current professors Kelli Scott Kelley, Michael Crespo, and Robert Hausey. While their styles and their missions vary, and the combination may seem strange at first, there is a common thread: all these artists find inspiration in the natural world and use animal and human imagery in their work.

The *LSU Art: Past and Present* gallery will be a flexible and ever-evolving space. In addition to displaying works of past and present professors and students, we envision exhibitions of visiting artists or artists who taught LSU professors. This gallery is an exciting new venture and will reaffirm the cooperative bonds between the LSU College of Art and Design and the LSU Museum of Art.



TOP: KELLI SCOTT KELLEY (American, b. 1961), *The Allies*, 2008. Acrylic on stitched canvas. Collection of the Artist. Photo: Kevin Duffy **RIGHT: CAROLINE DURIEUX** (American, 1896-1989), *Subculture*, 1972. Black and white electron, ed. 4/10. Gift of the artist, LSU MOA 74.1.12 **LEFT: KELLI SCOTT KELLEY** (American, b. 1961), *Promise*, 2007. Acrylic on stitched canvas. Collection of the Artist. Photo: Kevin Duffy



Confetti & Fireworks

Once again the July Fourth fundraiser, benefiting LSU MOA's educational programs, was a great success! From delicious Texas Roadhouse barbeque and tasty Kleinpeter ice cream-Coke floats to the smooth sounds of Kenny Kleinpeter and Stars 'N Stripes Shooters, the event made one amazing Fourth of July! Thanks to Heather Savoy, Sue Anne Cox, and the rest of the committee for creating such a memorable evening of food, fun, and fireworks!



COVER IMAGE: STEPHEN PAUL DAY *AI*, (detail) 2006. Cast crystal and patinated bronze. Purchased with funds from the Friends of LSU Museum of Art Endowment, LSU MOA 2008.4



Not receiving e-mails about LSU Museum of Art upcoming events and promotions? Contact Chelsea H. Catlett, membership coordinator at charr24@lsu.edu; 225.389.7213.

Endowment Society Spring Social Leads to

3 New LSU Museum of Art Acquisitions

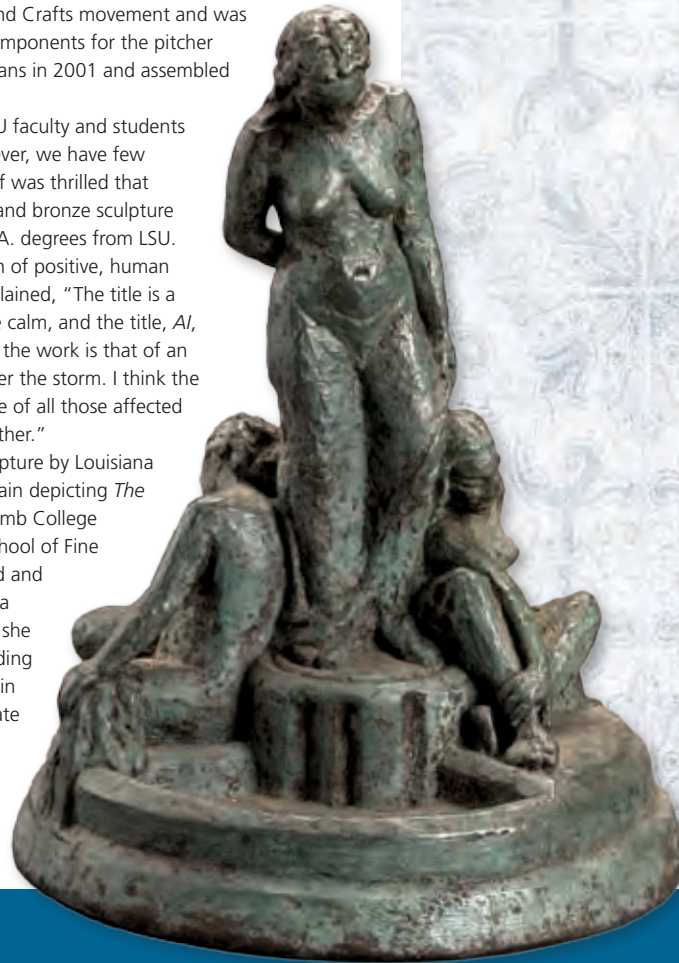
The LSU Museum of Art is thrilled to announce three new acquisitions chosen at the Endowment Society spring social in April. After evaluating the collection to determine areas of need, the Museum's staff chose eleven objects to present to the Endowment Society at the social. Each attendee was given a packet of 30,000 MOA "dollars," which represented the amount of money available for acquisitions this year. Society members then used that money to place their votes for their favorite objects. In the end, the Museum was thrilled to find that they could add not just one but three new objects to the collection.

The first is a pair of hand-hammered sterling silver pieces for the Newcomb collection. While LSU MOA owns an extensive collection of Newcomb pottery, textiles, works on paper, and metalwork, it had only one small piece of Newcomb silver, a solitary cocktail fork. The staff found a pitcher and a goblet by Rosalie Roos Wiener, one of the most renowned Newcomb silver artists, for sale in New Orleans. She specialized in the design and fabrication of goblets with the elegant, simplified style of the Arts and Crafts movement and was awarded the title of master craftsman in 1930. The components for the pitcher were found in her family's house in Uptown New Orleans in 2001 and assembled posthumously by master silversmith, Ellis Joubert.

The Museum is actively collecting works by past LSU faculty and students who have gone on to earn national reputations; however, we have few pieces of three-dimensional work in this area. The staff was thrilled that the Endowment Society chose an elegant cast crystal and bronze sculpture by Stephen Paul Day, who received his B.F.A. and M.F.A. degrees from LSU. This sculpture, called *AI*, is a touching commemoration of positive, human interactions in the wake of Hurricane Katrina. Day explained, "The title is a word-play on the 'eye' of the storm, the spiral and the calm, and the title, *AI*, which means 'love' in Japanese. The overall texture of the work is that of an archeological dig, that encrusted look so prevalent after the storm. I think the proper inspiration was, is, the connection and embrace of all those affected after the storm and their natural desire to help each other."

Finally, the Endowment Society chose a bronze sculpture by Louisiana artist, Angela Gregory. The work is a study for a fountain depicting *The Three Graces*. Angela Gregory graduated from Newcomb College in 1925, receiving a scholarship to study at Parsons School of Fine and Applied Art in Paris. Her work is classically inspired and reflects her training in France with Antoine Bourdelle, a protégé of Rodin. When she returned to New Orleans she received many commissions for public sculpture, including commissions for work at the Criminal Courts building in New Orleans and eight of the profiles that ring the State Capitol in Baton Rouge.

These three objects are now on view in the Museum through 2008.



MAIN: ANGELA GREGORY (Louisiana, 1903–1990), *Three Graces Fountain Study*, c. 1940. Bronze with green patina, 12 2 x 10 in. 2008.5 **TOP RIGHT: STEPHEN PAUL DAY** *AI*, 2006. Cast crystal and patinated bronze. Purchased with funds from Friends of the LSU Museum of Art Endowment, LSU MOA 2008.4 **MIDDLE: ROSALIE ROOS WIENER**, *Pitcher and Goblet*, c. 1930-1935. Hand hammered sterling silver, 11 x 10 in.; 7 x 3 ½ in. Purchased with funds from Friends of the LSU Museum of Art Endowment with Assistance from Jean Bragg Gallery, 2008.3.1-2

Future Exhibitions

RODIN

a magnificent obsession

Sculpture from the Iris and B. Gerald Cantor Foundation

Rodin: A Magnificent Obsession

Organized and made possible by the Iris and B. Gerald Cantor Foundation
Open January 24, 2009 through April 19, 2009

TOP: AUGUSTE RODIN (French, 1840-1917), *The Thinker*, modeled 1880, reduced 1903. Bronze, 14 3/4 x 7 7/8 x 11 3/8 in. Iris and B. Gerald Cantor Foundation, promised gift to the North Carolina Museum of Art. **BOTTOM: AUGUSTE RODIN** (French, 1840-1917), *The Kiss*, modeled 1881-1882. Bronze, 34 x 17 x 22 in. Iris and B. Gerald Cantor Foundation, promised gift to the North Carolina Museum of Art.



Also On Display



American Masters From the Blanton Museum of Art's Mari and James A. Michener Collection

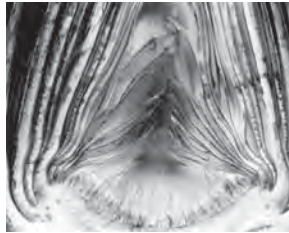
Open through November 30, 2008

ROBERT INDIANA (American, b. 1928), *Highball on the Redball Manifest*, 1963. Oil on canvas, 60 x 50 in. Blanton Museum of Art, The University of Texas at Austin, Gift of Mari and James A. Michener, 1991.243. Photo: Rick Hall.

Through the Lens Selections of 20th-Century Photography

Open through January 2009

EDWARD WESTON (American, 1886-1958), *Artichoke Halved*, 1930. Gelatin silver print, promised gift of William Richard and Judith Ann Smith, L2007.1.43. Photo: Kevin Duffy.



Michael Frederic Daugherty Collection, bequeathed by Andrea Mills

Open through January 2009

DENNIS COBB (American, b. 1954), *What's It to You, Moby Dick? This Is Chicken Town*, c1980. Cast aluminum, 2008.2.5a-f Photo: Kevin Duffy.

John T. Scott, Third World Banquet Table

On display through March 2009

JOHN T. SCOTT (American, 1940-2007), *Third World Banquet Table*, 1980-2004. Rosewood and bronze; Courtesy of Arthur Roger Gallery, L2008.1. Photo: Arthur Roger Gallery.



Also at the Shaw Center for the Arts

Alfred C. Glassell Jr. Exhibition Gallery

First Floor

For more info contact Malia Krolak, gallery coordinator for the LSU School of Art, at 225.389.7180; artgallery@lsu.edu.

Glassell Film Fest: Recent Works by Louisiana Filmmakers

September 5 - 28;

Reception: September 5, 6pm - 8pm

In conjunction with
**LSU Art:
Past and Present**

**Lineage II: Kathryn Hunter,
Johanna Paas, Adam Posnak and Joseph Blaine Whisenhunt**
October 4 - November 2; Reception: 6pm - 8pm

The Sky is Gray - Visual Works Inspired by Ernest Gaines
November 11 - December 10; Reading: November 16, 4pm; Reception: November 16, 5pm - 7pm

Young Professionals of LSU MOA

3rd Thursdays

A new excuse to start your weekend early: Thursdays are the new Fridays! Get ready to get down from 6pm-9pm every Third Thursdays starting in October. Downtown Baton Rouge has never been hotter with live music and entertainment. Admission is only \$5 for LSU MOA members and \$10 for nonmembers. Price includes admission to entertainment on the 4th floor and the museum on the 5th floor. A cash bar will be provided with \$3 drink specials.



October 16 WICKED

From "poison" appetinis to one-of-a-kind costumes—don't miss out on this wicked evening!

November 20

A Salute to American Masters

We'll take a moment to pay homage to the current exhibition, *American Masters*, with all American art, food, music, and beer!

If you are interested in volunteering for Third Thursdays—whether it's greeting guests, selling memberships, or planning a Third Thursdays event of your own—we'd love your help! Volunteers receive free admission and recognition in our newsletter! For more information, contact Chelsea H. Catlett at charr24@lsu.edu; 225.389.7213.

Join the YPs and get the most out of your museum membership. It's just one more way to support the arts in Baton Rouge.

www.lsumoa.com/yps



We're on MySpace!

Become our friend on MySpace! Be the first to know about upcoming events. Check out our party pix, meet new people, and find other great networks! www.myspace.com/lsumoa.

Lunch 'N' Learn with artist Edward Pramuk

The Young Professionals did it again with another successful event! Guest speaker Edward Pramuk, artist and retired LSU professor, spoke to a room of over 50 guests about his personal experiences and of the Abstract Expressionist movement. Thanks to Brandi Simmons, Sarah Young, and Susannah Bing for putting on such a great program!



S	1 Museum Closed	T	4 Open until 8pm Frame to Frame: Anchors Aweigh \$10 LSU MOA and Manship Theatre members, \$15 non-members, Fifth Floor and Manship Theatre, 6pm	F	5 LSU Art Past & Present Opening Reception Fifth Floor, 6:30pm – 8:30 pm
S	7 Free First Sunday Free Admission, Fifth Floor	T	11 Open until 8pm	F	13 Shaw Center's Second Saturdays: A Birthday Party for Robert Indiana Free Admission, Fifth Floor, 10am – 2pm
	8 Museum Closed	W	18 Open until 8pm		
	15 Museum Closed	W	28 Open until 8pm		
	22 Museum Closed				
	29 Museum Closed				

SEPTEMBER

OCTOBER

S	5 Free First Sunday Free Admission, Fifth Floor	T	9 Open until 8pm Frame to Frame: Good Night, and Good Luck. \$10 LSU MOA and Manship Theatre members, \$15 non-members, Fifth Floor and Manship Theatre, 6pm	F	11 Shaw Center's Second Saturdays: Dots to Dots Free Admission, Fifth Floor, 10am – 2pm
	6 Museum Closed	W	16 Open until 8pm Third Thursdays: Wicked \$5 LSU MOA members, \$10 non-members, Fourth and Fifth Floors, 6pm – 9pm		
	13 Museum Closed	W	23 Open until 8pm Evenings with Art \$30 LSU MOA members, \$60 non-members, 6 week course, Second & Fifth floors, 6:30pm – 8pm		
	20 Museum Closed	T	30 Open until 8pm Evenings with Art \$30 LSU MOA members, \$60 non-members, 6 week course, Second & Fifth floors, 6:30pm – 8pm		
	27 Museum Closed				

S	2 Free First Sunday Free Admission, Fifth Floor	T	6 Open until 8pm Evenings with Art \$30 LSU MOA members, \$60 non-members, 6 week course, Second & Fifth floors, 6:30pm – 8pm	F	8 Shaw Center's Second Saturdays: An Abstract Rose for You Free Admission, Fifth Floor, 10am – 2pm
M	3 Museum Closed	W	13 Open until 8pm Evenings with Art \$30 LSU MOA members, \$60 non-members, 6 week course, Second & Fifth floors, 6:30pm – 8pm		
	10 Museum Closed	W	20 Open until 8pm Third Thursdays: A Salute to American Masters \$5 LSU MOA members, \$10 non-members, Fourth & Fifth Floors, 6pm – 9pm		
	17 Museum Closed				
	24 Museum Closed				

NOVEMBER

Events

SEPTEMBER

4 Frame to Frame \$10 LSU MOA and Manship Theatre members, \$15 non-members; 6pm Toast the Exhibition, 7:30pm Film. Tickets at manshiptheatre.org or 225.344.0334. Members call for discount. Oscar Award winning, *Anchors Away* will bring you back to the 1940s. The magical performances of Frank Sinatra, Kathryn Grayson, Gene Kelly and Jerry the Mouse steal the show in this "laugh out loud" musical. This program is made possible with support from the AI and Anne Rotenberg Family Fund of the Baton Area Foundation.

5 LSU Art: Past and Present Opening Reception Fifth Floor, 6:30pm – 8:30 pm Dedicated to a rotating display of work by LSU art professors and students, *LSU Art* opens to feature the works of Paul Dufour, Caroline Durieux, Armin Scheler, Duncan Ferguson, Kelli Scott Kelley, Michael Crespo and Robert Hausey

7 Free First Sunday Free Admission, Fifth Floor

13 Shaw Center's Second Saturdays: A Birthday Party for Robert Indiana Free Admission, Fifth Floor, 10am – 2pm Come celebrate artist Robert Indiana's birthday! Find out why his art is worth more than a thousand words. Supplies are limited and available on a first-come, first-served basis. Children must be accompanied by an adult who is prepared to provide assistance. This workshop is supported through a grant from the Pennington Family Foundation.

OCTOBER

5 Free First Sunday Free Admission, Fifth Floor

9 Frame to Frame \$10 LSU MOA and Manship Theatre members, \$15 non-members; 6pm Toast the Exhibition, 7:30pm Film. Tickets at manshiptheatre.org or 225.344.0334. Members call for discount. Nominated for six Academy Awards, *Good Night, and Good Luck* will have you on the edge of your seat! Starring George Clooney, this intense film portrays the conflict between journalist Edward R. Murrow and U.S. Senator Joseph McCarthy. This program is made possible with support from the AI and Anne Rotenberg Family Fund of the Baton Area Foundation.

11 Shaw Center's Second Saturdays: Dots to Dots to Dots Free Admission, Fifth Floor, 10am – 2pm Peter Ford Young's *Capitalist Masterpiece #26*, on display in the *American Masters* exhibition, will inspire you to create your own spotted, dotted, and speckled work of art. Supplies are limited and available on a first-come, first-served basis. Children must be accompanied by an adult who is prepared to provide assistance. This workshop is supported through a grant from the Pennington Family Foundation.

Evenings with Art: 20th Century American Six week course: \$30 LSU MOA members, \$60 non-members, Second and Fifth floors, 6:30pm – 8pm The Arts Council of Greater Baton Rouge's Community School for the Arts has teamed with the LSU Museum of Art to present *Evenings with Art*, a six week art history course. Gain further insight into the arts as you explore the LSU Museum of Art's permanent collection and special exhibitions. For more information, please contact the Arts Council of Greater Baton Rouge at 225.344.8558.

16 Third Thursdays: Wicked \$5 LSU MOA members, \$10 non-members, Fourth and Fifth Floors, 6pm – 9pm Come enjoy "poison" apple-tinis and one-of-a-kind costumes! Third Thursdays events include live music, a cash bar and art. \$3 Drink Specials. Sponsored by the Louisiana Lottery Corporation.

Evenings with Art: Portraits and Representation Six week course: \$30 LSU MOA members, \$60 non-members, Second and Fifth floors, 6:30pm – 8pm

23 Evenings with Art: Louisiana Arts and LSU Six week course: \$30 LSU MOA members, \$60 non-members, Second and Fifth floors, 6:30pm – 8pm

30 Evenings with Art: Arts and Crafts Movement and Newcomb Six week course: \$30 LSU MOA members, \$60 non-members, Second and Fifth floors, 6:30pm – 8pm

NOVEMBER

2 Free First Sunday Free Admission, Fifth Floor

6 Evenings with Art: 20th Century American Six week course: \$30 LSU MOA members, \$60 non-members, Second and Fifth floors, 6:30pm – 8pm

8 Shaw Center's Second Saturdays: An Abstract Rose for You Free Admission, Fifth Floor, 10am – 2pm Enjoy wonderful colors and textures as we squiggle, twist, wave, and swirl our own abstract rose creation reminiscent of John Ferren's *A Rose for Gertrude Stein*, on display in the *American Masters* exhibition. Supplies are limited and available on a first-come, first-served basis. Children must be accompanied by an adult who is prepared to provide assistance. This workshop is supported through a grant from the Pennington Family Foundation.

13 Evenings with Art: Photography Six week course: \$30 LSU MOA members, \$60 non-members, Second and Fifth floors, 6:30pm – 8pm

16 Third Thursdays: A Salute to American Masters \$5 LSU MOA members, \$10 non-members, Fourth and Fifth Floors, 6pm – 9pm Come enjoy a final look at the exhibition, *American Masters*, and celebrate great American artists. Third Thursdays events include live music, a cash bar with \$3 drink specials, and art. Sponsored by the Louisiana Lottery Corporation.

23 Evenings with Art: Rodin and French Art Six week course: \$30 LSU MOA members, \$60 non-members, Second and Fifth floors, 6:30pm – 8pm

**Shaw Center's
Second Saturdays Family programs:
Sept 13, Oct 11, & Nov 8**

Art in Action



The LSU Museum of Art Survives Another Summer!

LSU MOA was swarming with kids determined to be the sole survivor in our summer program for local camps. "Survivor: MOA Island" challenged teams of campers to survive challenges throughout the galleries.

LSU MOA's Teen Tribal Leaders volunteered their time to plan and facilitate the "island challenges," with an emphasis on fun while learning about art. Our volunteers' creativity and leadership greatly improved campers' experiences. We would like to thank Alex Gautreaux, St. Joseph's Academy; Jeannie Grodner, St. Michael High School; Tess Grodner, St. Michael High School; Emily Manuel, Baton Rouge High School; Bri Mozie, St. Joseph's Academy; Patrick Richmond, Catholic High School; Katelynn Tonguis, Baton Rouge Magnet High School; Brooke Traweck, Catholic of Pointe Coupee; and Benjamin Wiseman, Episcopal.

We would also like to thank the Office of the Mayor-President, City of Baton Rouge, and Parish of East Baton Rouge, without whom free admission for Baton Rouge-area camps would not have been possible.



PLANNING A SPECIAL EVENT?

Break the mold of past events and host an unforgettable experience at the LSU Museum of Art!

Whether you are planning a company event, a formal dinner party, a wedding reception, or an LSU Tigers victory party, we guarantee your guests have never experienced a venue like this, and it is one they will never forget. We have the beautiful Bert and Sue Turner Gallery and Alfred C. Glassell boardroom, with sweeping views of Lafayette Park and the Mississippi River; the Paula Garvey Manship Floor in the cantilever section of the Shaw Center for the Arts; and the Irene W. Pennington Rooftop Terrace, with an outdoor sculpture garden and unforgettable views of the Mississippi River and downtown Baton Rouge. Our striking spaces will transform any event into a very special occasion. For more information, please visit our website at www.lsumoa.com, or for a tour of our facilities and help coordinating your event, please contact Renee B. Payton at 225.389.7206; renee@lsu.edu.



MOA News

Shirley M. Boyce Education Endowment Fund

LSU MOA lost an extraordinary friend and support in Laura Boyce. Laura spearheaded a number of campaigns for the Museum and most recently served as a prime mover for our stunning new building in downtown Baton Rouge. In all cases, she kept the Museum first in her thoughts and deeds. Prior to her untimely death she established the Shirley M. Boyce Education Endowment Fund with the LSU Foundation. The purpose of the fund was to support the "educational mission and individual educational programs of the Museum."

A number of people have generously contributed to this endowment, including

- Ms. Annette D. Barton
- Hals and Rebecca Benhard
- Taylor Bennett/Mesh Design, LLC
- Carol Anne and Sidney Blitzer, Jr.
- Louis and Julianne Bonnacaze
- Michael Robinson and Donald Boutté
- Robert and Linda Bowsher
- John and Linda Davies
- Ms. Mary Frey Eaton
- Mr. and Mrs. G. Lee Griffin
- Mrs. H. H. Hanks
- Mr. and Mrs. James B. Hanks
- Dr. Thomas and Melanie Hansbrough
- Ms. Nita K. Harris
- Hulsey, Harwood and Co.
- Edward Kelley/American Custom Yachts
- Ms. Mary Jo Kidd
- Dr. Laura Lindsay
- Richard and Susan Lipsey
- Nancy and Ray Marchand, Jr.
- Ms. Mary Jo Mayfield
- Rogers and McDaniel Ltd.
- Charlotte Ray and Phillip Ray
- Charles and Jerry Schwing

Annual Meeting

LSU MOA had its first Annual Membership Meeting on June 12 with a behind-the-scenes look at how an exhibition is installed. Linda Bowsher, Advisory Board Chair, thanked outgoing board members Phillip Juban, Paul Murrill, Michael D. Robinson, Boo Thomas, and Sue Turner and recognized returning and new members Marvin Borgmeyer; Eugene Groves; Charles McCowan, Jr.; Emalie Boyce; David Cronrath; Heather Day; and Jeffery L. McLain. The Sue Turner Award was presented to Ellen Langdon Moore for Outstanding Individual Commitment to the Arts.



THE FUND WAS TO SUPPORT THE EDUCATIONAL PROGRAMS OF THE MOA

The LSU Museum of Art would like to congratulate Museum volunteer, Courtney Spring, on completing an excellent Honors Thesis project, *Fear and Loathing in Contemporary British Art*, and for being the recipient of the very competitive Rudd-Martin Thesis Award. Courtney's paper will be published in the *LSU Honors College Journal of Undergraduate Research*.
Way to go, Courtney!

Thank You

Exhibition Sponsors
Bob and Linda Bowsher
Henry Insurance Service, Inc.

Carl and Susie Blyskal
Michael D. Robinson and Donald J. Boutté
Nadine Carter Russell
Bruce and Nola Sharky
College of Art +Design Dean's Circle

LSU MOA 2008 Corporate Members

JP Morgan Chase
Lee Michaels Fine Jewelry
Public Systems Associates, Inc.
Taylor Clark Gallery
Whole Foods Market

Confetti and Fireworks Sponsors

Skyrocket Sponsors
Charles and Mary McCowan
Kleinpeter Dairy Farms

Flare Sponsor
Noelie Harmon

In Kind
Texas Roadhouse
Kleinpeter Ice Cream
Bloom Baum's
Coca-Cola
Kenny Kleinpeter
Mockler Beverage
Happy Note
Mr. Margarita

Media Sponsors
The Riverside Reader
Country Roads Magazine
Guaranty Broadcasting
The Advocate
Town Favorites

Annual Meeting Sponsor
Cane's Chicken Fingers
Nadine Carter Russell
Susan Lipsey
Linda Bowsher

Frame to Frame Sponsor
Al and Anne Rotenberg Family Fund

Third Thursdays Sponsor
Louisiana Lottery Corporation

Support Fund Donation
In Memory of Mrs. Miriam Schendle:
Hulsey, Harwood and Co.

General Donation to the Fund:
Brett and Renee Furr
Paul M. Haygood
Jeffery McLain

Newsletter and Design Sponsor
Stun Design and Advertising

Corporate Member and Sponsor Opportunities

For more information contact
Melissa Daly at 225.389.7212;
mdaly2@lsu.edu



LSU MOA Support Fund

PLEASE PRINT

I AM ENCLOSING MY CONTRIBUTION OF \$ _____ DATE _____

DONOR'S NAME _____

DONOR'S ADDRESS _____

IN HONOR OF _____

IN MEMORY OF _____ IS THIS DEATH RECENT? Yes No

ACKNOWLEDGE TO _____

ADDRESS _____

HOW IS HONOREE/DECEASED RELATED TO YOU? _____

HOW IS HONOREE/DECEASED RELATED TO RECIPIENT OF ACKNOWLEDGEMENT? _____

Payment Options pick one

MY CHECK FOR \$ _____ IS ENCLOSED.
MAKE CHECK PAYABLE TO: THE LSU FOUNDATION.

PLEASE CHARGE \$ _____ TO MY:
 AMERICAN EXPRESS DISCOVER MASTER CARD VISA

ACCOUNT # / EXPIRATION DATE _____

NAME AS IT APPEARS ON CARD _____

SIGNATURE _____

The LSU MOA Support Fund provides a means for giving memorial and special gifts in recognition or remembrance of loved ones and friends. This is a wonderful way to honor someone on a special occasion, for a personal achievement, or for a life milestone. Contributions to the fund can be submitted via the Support Fund Form or by contacting the Development Office at 225.389.7213.



WELCOME NEW MEMBERS



- Purita R. Alvero
- Jeffrei Clifton
- Christine Cook
- Mr. and Mrs. Francis Guglielmo
- Wendy Hazey
- Ciara Marie Hazey
- Ann Hogan
- David and Nicole Holcombe
- Mary Alice Mallett
- Luigi and Patricia Marzilli
- Gary Ragan
- Mrs. Katherine Rathbun and Edward Richard

To find out more information on how to become a member of LSU MOA contact Chelsea H. Catlett at 225.389.7213; charr24@lsu.edu

Make Your Move. Join the LSU Museum of Art Today!

Annual membership in the LSU Museum of Art provides major support for museum exhibitions, educational programs, and the research, conservation, and expansion of the permanent collection.

All LSU MOA members receive free admission to the museum, a 20% discount on Museum Store purchases, the quarterly newsletter *ArtTalk*, discount to programs and invitations to special events. Members are invited to special exhibition previews and members' receptions. Members also receive a 15% discount on meals at the Capital City Grill for both locations, a 10% discount on meals at Tsunami and a free upsize on coffee purchases at PJ's Coffee, Shaw Center for the Arts.

MEMBER NAME & TITLE Write name as you wish it to appear in our records and acknowledgments:

ADDRESS

EMAIL

PHONE: HOME & WORK

- Yes!** I would like to join the Young Professionals of the LSU MOA, to help promote art and culture in Baton Rouge. CHECK TO RECEIVE AN EMAIL INVITATION TO OUR NEXT MEETING

Payment Options PICK ONE

- My check for \$ _____ is enclosed. Make check payable to: The LSU Foundation.

- Please charge \$ _____ to my:
- AMERICAN EXPRESS VISA
- DISCOVER MASTER CARD

EXPIRATION DATE

NAME AS IT APPEARS ON CARD

SIGNATURE

For more information contact Chelsea H. Catlett at 225.389.7213; charr24@lsu.edu

Return form and payment to:

LSU Museum of Art
Membership Office
Shaw Center for the Arts
100 Lafayette Street
Baton Rouge, LA 70801

LSU faculty and staff receive a 10% discount on individual through benefactor level memberships.

* NARM benefit allows members at the Patron level and above to receive reciprocal membership privileges at over 150 museums, gardens and historical sites throughout North America. Please refer to our website, www.lsu.edu/sumoa for a complete listing of participating sites.

LSU MOA Staff

Tom Livesay, Executive Director
Victoria Cooke,
Assistant Director for Curatorial Affairs
Frances R. Huber, Assistant Director for
Collections Management
Becky Adams, Administrative Coordinator
Melissa Daly, Director of Development
Chelsea Harris Catlett,
Membership and Data Coordinator
Reneé B. Payton, Marketing Director
Lara Gautreau, Education Curator
Natalie Mault, Assistant Curator
Misty Taylor, Assistant Registrar
Kevin Salzman, Preparator
LeAnn Russo, Museum Store Manager

Board Members

Chair: Linda Bowsher
Secretary/Treasurer: Cornelius Lewis
Past Chair: Susan Lipsey
Mark Bensabat
Brenda Berg
Marvin Borgmeyer
Emalie Boyce
David Cronrath
Sue Anne Cox
Heather Day
Cheryl McKay Dixon
Mary Frey Eaton
Sharon Field
Natalie Fielding
Ashley Fox-Smith
Eugene Groves
Jeffery McLain
Katherine Ragland
Alison Rodrigue
Jerry Schwing
Honorary: Nadine Carter Russell
Ex-Officio: Tom Livesay

Admission

Adults: \$8, Seniors 65+ and students with I.D.: \$6
LSU faculty /staff with I.D.: \$6
Children 5 to 17: \$4
Children under 5: Free

Hours

Tues - Sat: 10 am to 5 pm
Thurs: 10 am to 8 pm
Sun: 1 pm to 5 pm
First Sunday of the Month: Free
Closed Mondays, Thanksgiving Day,
Christmas Eve, Christmas Day,
and All Major Holidays

Corporate Memberships

- Corporate Friend \$2,500**
Membership in the museum and Endowment Society, recognition in the museum and *ArtTalk*, invitation to special programming and events.
- Corporate Benefactor \$5,000**
Corporate Friend benefits plus exclusive use of Charles Phelps Manship Floor for private reception for 50 people.
- Corporate Philanthropist \$10,000**
Corporate Benefactor benefits plus exclusive use of Paula Garvey Manship Floor for a private reception for 100 people.



LSU Museum of Art Shaw Center for the Arts

100 Lafayette Street
Baton Rouge, LA 70801

225.389.7200 (general)
225.389.7210 (Museum Store)
www.lsu.edu/sumoa

Museum Store

LSU MOA Museum Store 100 Lafayette Street, Baton Rouge, LA 70801 225.389.7210



"The organic creation of glass is part of its mystique and power: a lightening storm, a bolt ignites and a piece of glass appears. Much like a genie rising from the desert sands of Africa. This magic is the lure and the passion of glass for me." —Juli Juneau

THE LSU MOA MUSEUM STORE offers an eclectic mix of gifts based on works in the collections and from past and current exhibitions. Here, you'll find museum publications, decorative objects, toys, scarves, books, jewelry, original artwork, ceramics, and stunning glass by artists like Juli Juneau. Juneau, a New Orleans artist, has traveled extensively throughout the world, including through 23 African countries, using these experiences and her curiosity as inspiration for her glass art.

For stunning glass by artist Juli Juneau and to find other wonderful gifts, visit the LSU MOA Museum Store.

Remember, members receive **20% off** each purchase.



Manship Theatre

TO BUY TICKETS

ONLINE
www.manshiptheatre.org

BY PHONE
(225) 344-0334

LSU Museum of Art | Shaw Center for the Arts



100 Lafayette Street
Baton Rouge, LA 70801

3rd Thursdays

***A new excuse to start your weekend early:
Thursdays are the new Fridays!*** Get ready

to get down from 6pm–9pm every Third Thursday starting in October. Downtown Baton Rouge has never been hotter with live music and entertainment. Admission is only \$5 for LSU MOA members and \$10 for nonmembers. Price includes admission to entertainment on the 4th floor and the museum on the 5th floor. A cash bar will be provided with \$3 drink specials.

