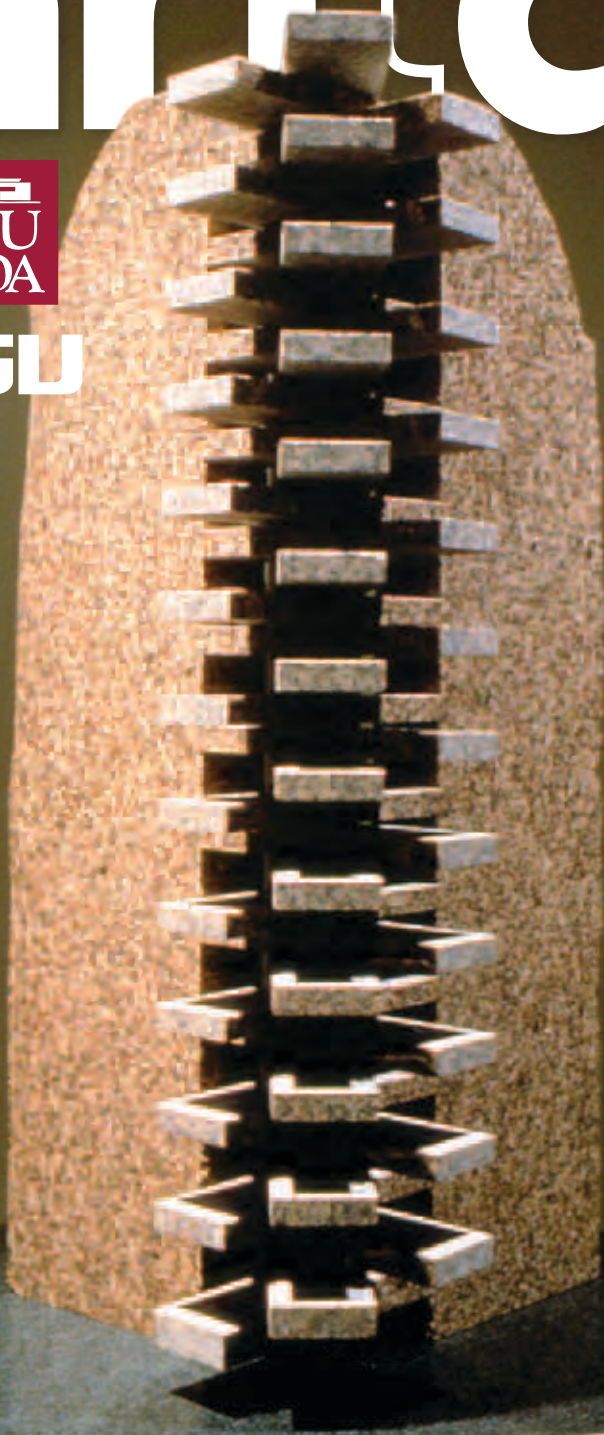


# arttalk



LSU



- 3 FEATURE Endowment Society Party
- 4+ EXHIBITIONS *Tearing Granite* : Jesús Morales
- 8+ CALENDAR Events, Talks, and Films
- 11 VOLUNTEERS

A red and white sign with a colorful striped canopy top, advertising a holiday exhibition. The sign features the text "LADIES AND GENTLEMEN CHILDREN OF ALL AGES! STEP RIGHT UP TO THE SPECTACULAR HOLIDAY EXHIBITION UNDER THE BIG TOP" and "ON DISPLAY THROUGH DECEMBER 2011".

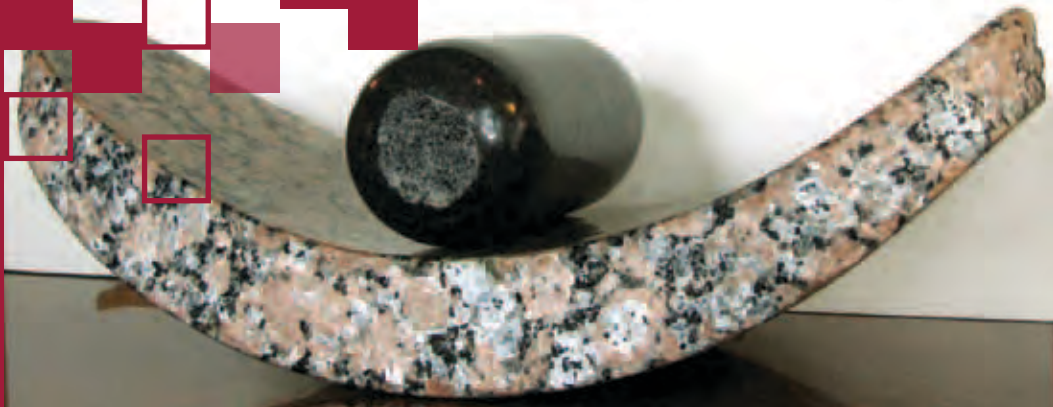
LADIES AND GENTLEMEN CHILDREN OF ALL AGES!

STEP RIGHT UP  
TO THE SPECTACULAR  
HOLIDAY EXHIBITION

UNDER THE  
BIG  
TOP

ON DISPLAY THROUGH DECEMBER 2011

# Director's Message



**BEGINNING IN JANUARY AND THROUGH THE END OF APRIL OF 2012, THE PUBLIC WILL HAVE A CHANCE TO SEE THE FABULOUS SCULPTURE OF JESÚS MOROLES AT THE LSU MUSEUM OF ART.** It is hard to describe the power of viewing granite handled as if it were paper. I have been a fan of Moroles since overseeing the installation of one of his fountains in the Museum of Fine Art in Santa Fe more than 25 years ago. During those intervening years, Moroles has been extraordinarily busy creating commissions, expanding his studio in Rockport, Texas, and placing his work in public and private collections all over the world. A second home/studio in Cerrillos, New Mexico, serves as a multipurpose exhibition space showcasing the work of artists from other countries.

If you visit New York City, you can see one of his largest works, located across the street from the Museum of Modern Art. Created in 1987, *Lapstrake* is large by anyone's standards, more than 22 feet tall and weighing in at 64 tons. Still, it is not his largest single work. He just completed a 50-foot-high work in Shanghai, surrounded by a 200 foot "river" of stone. From a standpoint of scale, his Houston Police Officers' Memorial (1992) comprises a huge area of somber stone and stepped pyramids, all in the pastoral setting of Hermann Park, just minutes from the downtown area.

How prolific is Jesús Moroles? More than 2,000 of his works can be seen in China, Egypt, Switzerland, Japan, France, and across the United States. He has participated in over 170 one-person exhibitions and approximately 200 group shows. He is represented in 300-plus museums throughout the world and in public collections as diverse as the City of Albuquerque and Xiadu Park, Yanqing, China. In recognition of his prodigious talent and output, he garnered a National Medal of Arts Award—the highest honor given to artists by the U.S. government—at the White House in 2008.

All of which brings us back to your chance to see and judge his work for yourself. The exhibition is unlike anything the Museum of Art has presented to date. These sculptures are more environmental than traditional, and the landscape of the galleries is altered accordingly. The granite is wedged apart here, hammered-and-polished there, and stacked, jolted, and formed into shapes that defy their media.

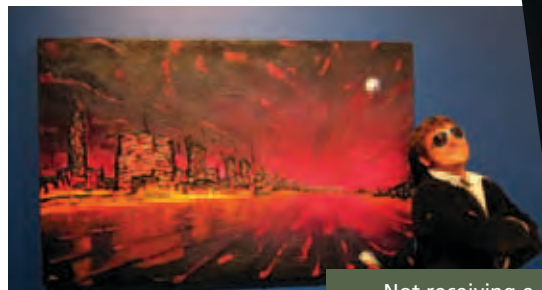
In 1981 Moroles wrote, "Part of what I attempt to do with my sculpture is to bring the quarry into the gallery—to make the stone important by drawing attention to it, and to show the finished pieces as the result of an interaction between man and nature."

The quarry is indeed in the gallery. Come see for yourself.

Thomas A. Livesay  
Executive Director  
LSU Museum of Art

**JESÚS MOROLES** (American, b. 1950), *Grinding Stone*, 2009. Black and Texas pink granite. 6 5/8 x 19 3/4 x 9 in. On loan from the artist.

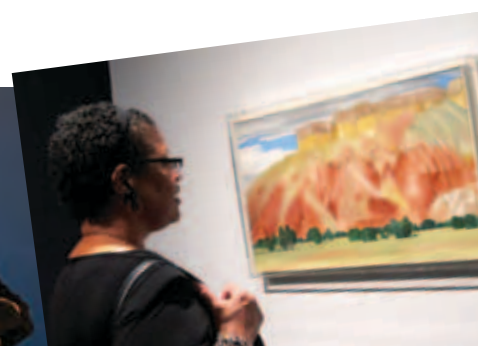
*"These sculptures are more environmental than traditional..."*



## Feature

### Endowment Society Party

On October 20, members of the LSU Museum of Art Endowment Society had an opportunity to get together for an exclusive event at the home of Donna and John Fraiche. The delightful evening, co-hosted by Fran and Leroy Harvey, was filled with art, conversation, and music. Guests were entertained by pianist Louis Wendt and violinist Christy Gandy while enjoying scrumptious hors d'oeuvres and wine. LSU Chancellor Michael Martin was in attendance and thanked the Society members for contributing to the sustainability of the Museum. The Endowment Society has provided funds for both acquisitions and programming and its members continue to contribute to the future of the Museum.



## Ask the Director

Providing advice in the visual arts since 2009

**Q.** "I see a lot of artists represented at the Museum and aspire to have my work on display as well. How do I go about it? Do I have to know someone at the Museum?"  
-*Working Hard in the Studio*

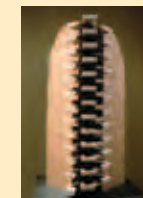
**A.** *Dear Working Hard:* First of all, keep working. The LSU Museum of Art wants to encourage as many artists as possible. Our galleries reflect our efforts to showcase work from both experienced and emerging artists on a regular basis. Naturally, we have a bias toward artists who have taught or were taught at Louisiana State University, and we often feature their work in our galleries. That being said, however, our track record for the past year has also included one-person shows of artists with no previous ties to the University or to the Museum of Art, George Rodrigue and Jesús Moroles.

The professional staff of the Museum is looking for artists with quality work. Pure and simple. You do not have to be affiliated with a gallery, but it certainly helps. A gallery gets your name out and acts as a visual filter for museums. Still, it begs the question of how selections are made. Virtually all museums have standards and criteria from which they work. Even the Museum of Bad Art (yes, there really is such a place) has criteria from which they select their collection. Mercifully, the LSU Museum of Art has radically differing standards.

So, keep working. Get some gallery support if at all possible. Get critiques from as many people as possible—preferably those with a degree of artistic knowledge. Who knows? Perhaps you will be the next artist discovered, right here in Baton Rouge.

Thomas A. Livesay  
Executive Director

*Send your questions about the visual arts to:*  
Director, LSU Museum of Art,  
100 Lafayette Street, Baton Rouge, LA 70801



**COVER IMAGE:**  
**JESÚS MOROLES** (American, b. 1950), *Brown Interlocking Triptych*, 1984. Morning rose granite. 39 7/8 x 20 1/2 x 19 in. On loan from the artist.

Not receiving e-mails about LSU Museum of Art upcoming events and promotions?  
Contact Renee' B. Payton at 225-389-7206 or renee@lsu.edu.





# TEARING GRANITE

## Jesús Moroles

January 22 – April 29, 2012

Centuries ago, famed Italian sculptor Gian Lorenzo Bernini (Italian, 1598 - 1680) boasted that in his hands, marble turned “soft as dough.” But even the masterful Bernini was never bold enough to attempt an artwork in granite! Second only to diamonds in its level of hardness, granite is known for its endless household and construction uses. Few have ventured to use the stone to produce fine art. Jesús Moroles, however, does just that. Moroles’ awe-inspiring, monumental sculptural works are featured in the exhibition *Tearing Granite*.

Moroles employs untraditional carving techniques. He uses a diamond saw almost like a chisel in order to cut painstakingly through the dense stone. Pushing the saw up and out repeatedly creates slices through the layers of granite. He then lets the stone break on its own, creating a contrast between rough and smooth surfaces.

Although Moroles seems to possess the extraordinary ability to make stone concede to his every desire, he admits that he does not have full control over the material. He claims that he struggles with granite, but he also suggests that this very resistance entices him to work with the medium.

Some of Moroles’ sculptures recall large prehistoric, monolithic stones, such as those at Stonehenge. More modestly sized figures reaffirm the presence of nature within the stone. Moroles’ sculptures are celebrated for their serenity, striking a delicate balance between nature and man-made art. His process may at first seem simple, but he has a deep understanding of the stone. He finds personality within each piece and extracts it through a series of deliberate movements.

*Tearing Granite: Jesús Moroles* will provide visitors with an experience different than most museum exhibitions. Visitors will be encouraged to touch, explore, and even sit on some of his works. A giant chessboard set, made entirely of granite, will command the space of one gallery floor, inviting patrons to play a game.

Observe Moroles’ bold works of granite, on display from January 22 through April 29, 2012.



Supported by a grant from the Louisiana State Arts Council through the Louisiana Division of the Arts and the National Endowment for the Arts.

**TOP:** Artist, Jesús Moroles **OPPOSITE PAGE TOP LEFT TO RIGHT: JESÚS MOROLES** (American, b. 1950), *Bench*, 2004. Black granite. 63 ¾ x 63 ¾ x 12 in. On loan from the artist. **JESÚS MOROLES** (American, b. 1950), *Shell*, 1990. Texas granite. 6 x 43 x 28 3/8 in. On loan from the artist. **BOTTOM: JESÚS MOROLES** (American, b. 1950), *Black Moonscape*, 2004. Black granite. 63 ¾ x 63 2/4 x 12 in. On loan from the artist.

## ALSO ON DISPLAY



LADIES AND GENTLEMEN CHILDREN OF ALL AGES!

## STEP RIGHT UP



## TO THE SPECTACULAR HOLIDAY EXHIBITION



## UNDER THE



# BIG TOP

ON DISPLAY THROUGH

DECEMBER 31, 2011

*Under the Big Top* is a fanciful exhibition on display throughout the holiday season. This exhibition highlights the magic and timelessness of the circus through the Museum's spectacular collection of toys and fine art and turn-of-the-century photography and circus posters on loan from a private collector.

**See ferocious stuffed animals and amazing antique toys!** Nostalgia fills the air as colorful circus wagons and trains full of exotic animals roll into the gallery space. The spectacle of dozens of antique toys, from the Museum's permanent collection and items on loan from a private collection bring amazement and delight to all.

**Enjoy exciting works of art!** The visual excitement that accompanies the circus has intrigued artists for centuries. Exotic animals march into the ring in a graphic watercolor painting by Newcomb Pottery artist Cecile Owen. View artworks that depict circus characters, including a nineteenth-century drawing of acrobatic figures by English illustrator John Leech. An abstraction print of a juggler by Caroline Durieux, a native New Orleanian and former LSU professor, will take your breath away.

**Be amazed by historic posters and photographs!** *Under the Big Top* features a display of circus images from a private collection. See vibrant and whimsical circus posters. Archival photographs of dancers, acrobats, and clowns from the 1930s-era circus provides an exclusive look at the private, behind-the-scenes world of the big top.

**Continue the heartwarming tradition!** Since the 1960s, the LSU Museum of Art has showcased vintage and antique toys during the holiday season. The Museum will participate in the U.S. Marine Corps Reserve Toys for Tots program in conjunction with the holiday show. During November and December, the Museum will collect new, unwrapped toys to be distributed to needy children within the greater Baton Rouge area. To share the joy of the season, bring a new toy with you when you visit *Under the Big Top*.

**STEP RIGHT UP, STEP RIGHT UP... BE AMAZED, BE ENCHANTED, BE MYSTIFIED, BE AMUSED... THE CIRCUS HAS BEGUN!!**

### Faces of Pride: Elizabeth Catlett

February – June 2012  
Modern Gallery

*Faces of Pride* is devoted to the powerful and timeless drawings, prints, and sculptures of famed artist Elizabeth Catlett, on loan from the Stella Jones Gallery in New Orleans. Catlett's inspiring works served as the inspiration for Rufus Reid's award winning jazz composition *Quiet Pride*, which will be performed at the Manship Theatre in conjunction with this exhibition.

**ELIZABETH CATLETT** (American, b. 1915), *Mother and child*, 1982. Bronze. Image courtesy of Stella Jones Gallery, New Orleans.



## Future Exhibitions



### Gregory Scott

March – September 2012  
Gallery I

At first glance, the works of Gregory Scott appear to be simple photographs or paintings. Upon closer inspection, however, they reveal surprising elements of movement through video. This movement is seamlessly incorporated into the still picture, resulting in narrative compositions that are puzzling, entertaining, and surprising.

**GREGORY SCOTT** (American, b. 1957), *Mytopia*, 2010. Archival digital print, oil on canvas and HD video. Image courtesy of Catherine Edelman Gallery, Chicago.



### Gabriel Dawe

April 2012 – April 2013  
Gill Hamilton Gallery

Gabriel Dawe's large-scale installations are made from thousands of different colored threads and take up to five weeks to create. His site-specific thread installations are breathtaking in their size and mesmerizing in their medium and color.

**GABRIEL DAWE** (Mexican, b. 1973), *Plexus No.3*, 2010. Thread, wood and nails. Image courtesy of the artist.

### Once Upon a Time

March – October 2012  
LA Machinery Gallery

From castles to frogs, this unique exhibition highlights selections from the permanent collection in a way that explores some of the best-known fairy tales of our time. This exhibition will be held in conjunction with the LSU English Department's *Enchantments: An Evening of Fairy Tales* on April 1.

**WILLIAM WESTALL** (British, 1781-1850), *Durham Cathedral from the River Side*, 1814. Oil on canvas. Gift of Mr. and Mrs. William May, 66.5.



## A Tale of Two Cities: Eugène Atget's Paris and Berenice Abbott's New York

Organized by the Syracuse University Art Galleries  
May 20 – July 22, 2012

*A Tale of Two Cities* examines the work of two artists who were inextricably linked to each other and to the development of modern photography. Eugène Atget, dismayed by the amount of architectural history being destroyed during the modernization of Paris, began photographing the city's shop fronts, streets, and neighborhoods. Berenice Abbott, who met Atget in 1925, was deeply affected by his images, saying later that they gave her a sudden flash of recognition—the shock of realism unadorned. Abbott later embarked on a project to document the ever-changing Gotham landscape of New York City. Her efforts produced a catalog of images that, like Atget's earlier photographs of Paris, records the essential character of the city.

In conjunction with *A Tale of Two Cities*, the LSU Textile and Costume Museum will showcase dresses and fashionable accessories from New York and Paris, dating between 1910 and 1950. The Hill Memorial Library on the LSU Campus will also host a complimentary exhibition on Fonville Winans.

**EUGENE ATGET** (French 1857-1927), *Untitled*, c. 1921-1926. Gelatin silver print. Syracuse University Art Galleries. **BERENICE ABBOTT** (American, 1898-1991), *Jersey Railroad Yard*, 1936. Gelatin silver print. Syracuse University Art Galleries.





# DEC

**1** Open until 8pm

**2** Museum Store Christmas Trunk Show 10am-8pm

**8** Open until 8pm

**15** Open until 8pm

**22** Open until 8pm

**29** Open until 8pm

**30** Last day to see *Under the Big Top*

**10** A Blue Holiday 1-4pm  
George Rodrigue Book Signing Shaw Center for the Arts Atrium, 2pm

**24** Museum Closed for Christmas Eve

**31** New Year's Eve Museum Closed



**4** Free First Sunday Free Admission, Fifth Floor  
Last day to see *Copley to Warhol: 200 Years of American Art*  
What Makes a Masterpiece? Free Admission, 2pm

**5** Museum Closed

**12** Museum Closed

**19** Museum Closed

**26** Museum Closed

**25** Museum Closed for Christmas

# JAN

**5** Open until 8pm

**12** Open until 8pm  
Meditation at the Museum Fifth Floor, 5:30pm

**14** Second Saturdays: Color Bingo Free Admission, Fifth Floor, 10am - 2pm  
Artist Demonstrations Fifth Floor, 1pm

**18** Distinguished Lecture Series: Jesus Moroles LSU College of Art + Design LSU Campus, First floor lecture hall (RM 103), 5pm

**19** Open until 8pm  
Museum after Dark: History of Coffee Fifth Floor, 5:30pm

**21** Members reception for *Tearing Granite: Jesús Moroles* 6:30 - 8:30pm

**26** Open until 8pm



**1** Museum Closed for New Year's Day

**2** Museum Closed

**9** Museum Closed

**16** Museum Closed

**23** Museum Closed

**30** Museum Closed

**22** *Tearing Granite: Jesús Moroles* opens to the public  
Gallery Talk: Jesús Moroles Fifth Floor, 2pm

# FEB

**2** Open until 8pm  
Meditation at the Museum Fifth Floor, 5:30pm

**9** Open until 8pm

**16** Open until 8pm  
Museum after Dark Fifth Floor, Time TBA

**23** Open until 8pm

**11** Second Saturdays: Name That Artwork! Free Admission, Fifth Floor, 10am - 2pm

**18** Museum Closed Spanish Town Parade



**2** Open until 8pm  
Meditation at the Museum Fifth Floor, 5:30pm

**6** Museum Closed

**13** Museum Closed

**20** Museum Closed

**27** Museum Closed

**5** Free First Sunday Free Admission, Fifth Floor  
Free First Sunday Tour Behind-the-scenes look at *Tearing Granite* with the curator Fifth Floor, 2pm

**19** Museum Closed

**28-29** Rufus Reid Project musical composition inspired by sculptures by Elizabeth Catlett. Manship Theatre, 7:30pm  
Contact Manship Theatre for tickets at 225-344-0334.

## Events

### DECEMBER

- 2 Museum Store Christmas Trunk Show** 10 am-8 pm, Museum open 5-8 pm, Free Admission,
- 4 Free First Sunday** Free Admission, Fifth Floor
- 4** Last day to see **Copley to Warhol: 200 Years of American Art Celebrating the Centennial of the New Orleans Museum of Art** Free Admission
- 4 What Makes a Masterpiece?** Free Admission, Fifth Floor, 2 pm The exhibition *Copley to Warhol* highlights works by significant American artists, many of which are considered "masterpieces." But what makes an artwork a "masterpiece?" Who bestows that honor? What criteria are used? John Bullard, the New Orleans Museum of Art Director Emeritus, shares his insight into this interesting and sometimes puzzling distinction.
- 10 A Blue Holiday** 1-4 pm The LSU Museum of Art is proud to announce an encore book signing by Louisiana favorite George Rodrigue. The fun begins with a book reading by Weny Rodrigue, then a book signing with George. Kids can participate in hands-on art, creating holiday ornaments and a Blue Dog mask. View the spectacular holiday exhibition *Under the Big Top*, our unique display of circus-themed toys and fine art from the museum's permanent collection, and turn-of-the-century photos and circus posters on loan from a private collector.
- 10 George Rodrigue Book Signing** Shaw Center for the Arts Atrium, 2 pm Books are available at the Museum Store. What a great holiday gift!

### JANUARY

- 12 Meditation at the Museum** Fifth Floor, 5:30 pm Instead of spending the evening stuck in traffic, unwind and relax with Meditation at the Museum with Pure Yoga instructor Alvin Temple. Through meditation and a sublime museum setting, you will learn to calm your mind and be more stable, still and aware. All levels are welcome at this monthly course. Participants are encouraged to bring mats, pillows or towels. Chairs will be provided. Come straight from work – no special exercise clothing is needed.
- 14 Second Saturday: Color Bingo** Free Admission, Fifth Floor, 10am – 2pm Colors are everywhere in the Museum of Art, but can you find them when you need five in a row? This bingo-with-a-twist will help you see things in a whole new hue! Bring a "Take-and-Make" home to create your own artwork inspired by



your museum visit. Children must be accompanied by an adult, "Take-and-Make" supplies are available on a first-come, first-served basis. Groups of 10 or more who would like to participate in our Second Saturday programs are encouraged to email education curator, Lara Gautreau to make a reservation at lgaut@lsu.edu. This program is made possible through support from Ms. Marjorie Childs.

- 14 Artist Demonstration** Free Admission, Fifth Floor, 1 pm The artist's process has fascinated and baffled viewers for centuries. Join LSU Past and Present gallery artists Alex Harvie and Chris Smith as they reveal how a blank canvas becomes a work of art.
- 18 Distinguished Lecture Series: Jesús Moroles** LSU College of Art + Design, LSU Campus, First Floor lecture hall (RM 103), 5 pm The LSU College of Art + Design Distinguished Lecture Series presents sculptor Jesús Moroles.
- 19 Museum after Dark: The History of Coffee** Fifth Floor, 5:30 pm With over 400 billion cups consumed every year, coffee is the world's most popular beverage. Join the owners of Strands Café, Baton Rouge as you sample coffees from different regions and learn about different brewing processes and flavors. Discover the long-standing history of this well-known drink in a museum setting complete with eighteenth- and nineteenth-century tea and coffee services.

- 21** Members reception for **Tearing Granite: Jesús Moroles** Fifth Floor, 6:30 – 8:30 pm
- 22 Tearing Granite: Jesús Moroles** opens to the public
- 22 Gallery Talk: Jesús Moroles** Fifth Floor, 2 pm Sculptor Jesús Moroles works in granite, which he calls "the heart and core of the universe." He approaches each granite block without preconception. Learn about this incredible contemporary artist as he shares with us his art and his methods in the newest exhibition, *Tearing Granite*.

### FEBRUARY

- 2 Meditation at the Museum** Fifth Floor, 5:30 pm Unwind and relax with Meditation at the Museum with Pure Yoga instructor Alvin Temple. Through meditation and a sublime museum setting, you will learn to calm your mind and be more stable, still and aware. All levels are welcome at this monthly course. Participants are encouraged to bring mats, pillows or

## Volunteer Opportunities at LSU Museum of Art

The LSU Museum of Art depends on volunteers. Opportunities are available to serve as docents, museum store clerks, and gallery attendants. You can assist with research, exhibition installation, public relations, events, and general office work. Consider volunteering your time. For more information, contact LeAnn Russo at 225-389-7211; lrusso@lsu.edu.

### VOLUNTEER PROFILE



## STUDENTS ARE A PART OF THE ARTS! STUDENT WORKER'S AND VOLUNTEERS

The LSU Museum of Art and Museum Store are proud to have student workers and student volunteers to help out on a daily basis. They are LSU students who study in many curriculums including marketing, advertising, mass communications, art education, biology and kinesiology. They help in the museum store as well as at the admissions desk in the museum. They also assist other museum staff when needed. We salute our student worker's!

**What made you want to volunteer at the museum?** We love being a part of the arts and the great atmosphere of the museum in the Shaw Center for the Arts.

**What is your favorite thing about LSU Museum of Art?** It is a wonderful learning experience.

**What has been your favorite thing about volunteering at LSU Museum of Art?** We like meeting visitors from all over the country, promoting the museum and becoming a member, working in the museum store, and learning from the staff. The exhibition opening receptions are a lot of fun too!



Be the first to know about upcoming events and exhibitions, meet new people, and find other great networks! Follow the LSU Museum of Art on Facebook, Twitter, and YouTube.

towels. Chairs will be provided. Come straight from work – no special exercise clothing is needed.

- 5 Free First Sunday** Free Admission, Fifth Floor
- 5 Insider's View of Tearing Granite** Free Admission, Fifth Floor, 2pm Any exhibition has its challenges, but an exhibition involving granite sculptures weighing over 1000 pounds can be extremely challenging. Discover *Tearing Granite*, as the curator reveals the insider's view of exhibition planning.

- 11 Second Saturday: Name That Artwork!** Free Admission, Fifth Floor, 10am – 2pm I can name that artwork in three clues. Based on the old favorite "Name that Tune". Visitors see who can recognize an artwork with the fewest number of clues. Be careful not to overestimate your powers of deduction – the consequences could lead

to serious laughter. Bring a "Take-and-Make" home to create your own artwork inspired by your museum visit. Children must be accompanied by an adult, "Take-and-Make" supplies are available on a first-come, first-served basis. Groups of 10 or more who would like to participate in our Second Saturday programs are encouraged to email education curator, Lara Gautreau to make a reservation at lgaut@lsu.edu. This program is made possible through support from Ms. Marjorie Childs.



- 16 Museum After Dark: The Game of Chess** Fifth Floor, Time TBA Jesus Moroles's stunning, large-scale granite chessboard is a featured work in the exhibition *Tearing Granite*. Chess has inspired artists from different times and cultures to create beautiful works of art. Join the Louisiana State University Chess Club for a game commonly associated with strategy and now with art.



## WELCOME NEW MEMBERS

Ms. Jeanie Achord	Ms. Leslie Dumler	Brent & Rebecca Kelley	Mr. and Mrs. David C. Rollins
Mr. Curtis Allen	Mr. Stanton Dupuy	Ms. Miller Killgore	Mr. Karl Roethermel
Ms. Elycia Marie Anderson	Stephen & Leslie Edwards	Ms. Ronette King	Lindsay O. & Donald P. Rougon
Mr. Adam Andre	Ann Elders & Jennifer Stanford	Mr. Charles Kirchem	August & Darlene Rowland
Ms. Angela Angelloz	Ms. Carole A. Falgout	Ms. Betty L. Kraft	Mr. James E. Russell
Ms. Brenda L. Babin	Ms. Marcella Fink	Ms. Paula Kuebler	Edward & Karla Salo
Ms. Anna Babin-Neal	Ms. Ellen Fletcher	Barbara & Robert Kuhn	Ms. Johanna Sandrock
Birgitta Baker & Daniel Hayes	Ms. Emily Flores	Ms. Jamie Kurumaji	Mr. Daniel Sauter
Mr. Paul Barbin	Ms. Jessie Francois-Johns	Guy & Betty LaBauve	Meghan & Robert Savage
Ms. Brownwyn Bariet	Mr. Jacob Frost	Ms. Lidonna Lancaster	Ms. Sarah Seibold
Mr. Ryan Beard	Mr. Lawrence Garrity	Ms. Patricia Landrum	Mr. Cliff Settoon
Mr. Marcus Bennett, IV	Mr. Drew Gaudet	Mr. William Lane	Mr. Milan R. Shah
Bo & Lynn Bennett	Ms. Joy Gauthier	Mr. Charles Lanphier	Ms. Jo Shriver
Anne & Joe Bennett-Colaricci	Richard Geurts & Lynn Lasen	Ms. Chelsea LeBlanc	Ms. Shelley Simmons
Mr. J. Scott Black	Ms. Kate Gilmore	Mr. Steven LeVan	Ms. Alexandra Simpson
Ms. Courtney Blair	Ms. Georgia Godwin	Mark & Katherine Leadon	Mr. Kent Sims
Ms. Amber M Blak	Dr. and Mrs. Richard Gold	Mr. Ed Lucas	Mr. James E. Slaughter
Ms. Rachel Blanc	Ms. Kathy Gonzalez	Mr. John Luffey	Mr. Jonathan Smith
Dr. Kenneth & Dixie Blue	Ms. Debbie Gough	Ms. Jacqueline MacDonald	Ms. Anela Smith
Mittie & Michael Bolton	Ms. Sandy Granger	Mr. Terry Mannion	Ms. Christina Smoorenburg
Mr. Daniel Bosch	Rene & Jonathan Greer	Bob Marks & Tom McCabe	John & Marilyn Spilling
Mr. Roelof Bosma	Ms. Janene M. Grodesky	Ms. Katherine Marshburn	Ms. Samantha Stevens
Ms. Gisele Boudreau	Ms. Ann Halphen	Ms. Jennifer Mayer	Ms. Cynthia Stover
Ms. Denise Bouvier	Ms. Denise Hamilton	Mr. Zakary McDonald	Ms. Tracy Streuli
Mr. Stuart Bowie	Mr. James Hamilton	Ms. Janet Meeks	Ms. Jeanne Strode
Dr. Lillian Bridwell-Bowles	Mr. Florent Hardy, Jr.	Mr. Richard D. Melton	Ms. Toni E. Sullivan-Adams
Justin & Pamela Brothen	Ms. Logan Harrell	Ms. Cynthia Moreno	Eddie Tessmer & Dawn Guillot
Ms. Kathryn Broussard	Ms. Endya Hash	Ms. Dorothy Moss	Joe & Mary Lana Toniolo
Mr. James H. Brown	Ms. Lynn Hathaway	Ms. Kelly Ann Munn	Kevin & Donna Torres
Ms. Elisabeth Burks	Ms. Bethany Hawkins	Mr. Robert Myer	Mr. Ben Treuting
Ms. Bunnie Cannon	Mr. Randy K. Haynie	Ms. Darien Northern	Ms. Sherry Turner
Ken & Mary Alice Carpenter	Ms. Michelle Hewes	Therasa & Dr. Andy Olinde	Mr. and Mrs. Thomas Vasta
Ms. Sharon Kay Collier	Ms. Leigh Hill	Mrs. Jane Oths	Ms. Andre Vaughn
William S. Condon & Peggy Meherin	Janette & Amy Holcomb	Neil Ann & James W. Parks	Ray & Tina Vince
Ms. Annette Crawford	Ms. Kali Holder	Mr. Jonathan Percle & Ms. Blair Bass	Ms. Roxane Voorhies
Ms. Mary Cunningham	Mr. Justin Howard	Jerry Piper & Jamie Politz	Mr. Matthew L. Wallace
Mr. Roger C. Cutrer	Elaine & Joseph Hynes	George & Deborah Plaeger	Ms. Maxine Watts
Vickie & Rhett Davis	Ms. Robin Jarvis	Doug & Mary Poole	Ms. Cheryl Welborn
Ms. Chrissy DellaCorte	Mr. Donald Jenkins	Barry & Sarah Raffray	Mr. Alan D. Williams
Ms. Becky Demler	Mr. Jeffrey Jenkins	Ms. Carla Reeves & Ms. Melinda Chambless	Ms. Cydney Wilson
Mr. Gary W. Dixon	Mr. Summer Dann Johnson	Ms. Sherry Richardson	Mr. Ty Winter
Paul & Irma Doucet	Mr. Laurence Kaptain	Kenneth & Delphine Riley	Phillip & Carole Wright
Carolyn Doucette & Jonathan Stevens	Ms. Kate Kearney	Jon & Shelby Robert	Ms. Callie Yates
David & Sheryl Dreznick	Mr. Patrick William Kelley	Ms. Keyshaedreana Robinson	Ms. Katherine Zimmerman

### Corporate Member & Sponsorship Opportunities

Raise your corporate profile by sponsoring the LSU Museum of Art, or by becoming a Corporate Member. For more information contact Melissa Daly at 225-389-7212; mdaly2@lsu.edu.

## PLANNING A SPECIAL EVENT

Looking for a *refined and elegant venue* to host your next special event? Whether your event calls for a standing reception or a seated dinner, the LSU Museum of Art can accommodate your entertainment needs with beauty and sophistication.

LSU MUSEUM OF ART MEMBERS RECEIVE A **20% DISCOUNT ON ALL RENTALS.**

For more information, please visit our website at [www.lsumoa.com](http://www.lsumoa.com). For a tour of our facilities and help coordinating your event, please contact Renee' B. Payton at 225-389-7206; renee@lsu.edu.



## Thank You

### LSU MOA Corporate Members

ABMB Engineers, Inc.  
Taylor Clark Gallery

### Copley to Warhol Exhibition Sponsors

AT&T Louisiana  
The Alma Lee and H.N. Saurage Jr. Fund  
A BRAF Donor-Advised Fund  
Charles E. Schwing

### Donations to Exhibition Fund

Michael Robinson & Donald Boutté  
for Copley to Warhol  
Anne & Paul Dietzel and Libby Johnson  
for Tearing Granite

### Second Saturdays Sponsor

Ms. Marjorie Childs

### Donations to Art Acquisition Fund

H.E. & Maxine Broemmelsiek

### Donations to Development Fund

Stephen Black  
JPMorgan Chase Cybergrants  
John Godbee

### Donations to Membership Fund

Drew Gaudet  
Marian Pyle  
Gail O'Quin

### Memorial Donations

In Memory of Dr. John J. Barnes, Sr  
*Lisa Barnes*  
In Memory of Gloria McAdams &  
In Memory of Marie Kavanagh  
*Michael Robinson & Donald Boutté*

### Donations to Program Endowment

Donna & John Fraiche  
Fran & Leroy Harvey  
Nita K. Harris

### Donations to Friends Fun

Ann Keogh

### Newsletter and Design Sponsor

Stun Design and Advertising

## Also at the Shaw Center for the Arts

### Alfred C. Glassell Jr. Exhibition Gallery, Shaw Center for the Arts

First Floor, For more info contact Malia Krolak, gallery coordinator for the LSU School of Art, at 225-389-7180; artgallery@lsu.edu.

### Amazon Visions, Vanishing Acts:

A multimedia installation by Christine Baeumler Through December 9

### 8 Fluid Ounces: A National Juried Ceramic Cup Show

January 25 – February 25, 2012

Juror: Kristen Kieffer, Reception: January 28, 6-8pm

# JOIN THE LSU MUSEUM OF ART TODAY!

Annual membership in the LSU Museum of Art provides major support for museum exhibitions, educational programs, and the research, conservation, and expansion of the permanent collection.

## All LSU MOA members receive:

- Free admission to the museum,
- The quarterly newsletter ArtTalk,
- Discounts to programs and invitations to special events,
- 20% discount on Museum Store purchases and Museum rental space,
- 15% discount on meals at Capital City Grill for both locations,
- 15% discount on meals at Stroubes Chophouse,
- 10% discount on meals at Tsunami, Baton Rouge,
- 10% discount at all Baton Rouge area Community Coffee Houses, and
- Free upsizes on coffee purchases at PJ's Coffee, Shaw Center for the Arts.

## MEMBER NAME & TITLE

---

## ADDRESS

---

## EMAIL

---

## PHONE: HOME & WORK

---

## Membership Levels

PICK THE MEMBERSHIP LEVEL YOU WANT

- Student \$15
- Individual \$40
- Dual/Family \$60

## Special Donor Memberships\*

- Patron \$100
- Sustaining \$250
- Benefactor \$500
- Endowment Society \$1,000

## Corporate Memberships

- Corporate Friend \$2,500
- Corporate Benefactor \$5,000
- Corporate Philanthropist \$10,000

## FOR MORE INFORMATION, CONTACT THE MEMBERSHIP OFFICE AT 225-389-7212.

Return form and payment to:  
 LSU Museum of Art  
 Membership Office  
 Shaw Center for the Arts  
 100 Lafayette Street  
 Baton Rouge, LA 70801

LSU faculty and staff receive a 10% discount on individual through benefactor-level memberships.

\* NARM benefit allows members at the Patron level and above to receive reciprocal membership privileges at over 150 museums, gardens and historical sites throughout North America. Please refer to our web site, [www.lsumoa.com](http://www.lsumoa.com) for a complete listing of participating sites.

## LSU MOA Staff

Tom Livesay, Executive Director  
 Melissa Daly, Director of Development  
 Fran Huber, Assistant Director for Collections Management  
 Natalie Mault, Curator  
 Lara Gautreau, Education Curator  
 Reneé B. Payton, Marketing Director  
 Becky Adams, Administrative Coordinator  
 Toni Bauer, Registrar  
 Reneé Smith, Preparator  
 LeAnn Russo, Museum Store Manager

## Board Members

Chair: Emalie Boyce  
 Vice Chair: Fran Harvey  
 Secretary/Treasurer: John Godbee  
 Alison Rodrigue Marchita Mauck  
 E. John Bullard Jeffery McLain  
 George Clark Kenneth Miles  
 Cheryl McKay Dixon Carolyn Nelson  
 Barbara-Anne Eaton Gail O'Quin  
 Donna Fraiche Emile Rolfs  
 vFr. Howard Hall Charles Schwing  
 Sarah Kracke Katherine Spaht  
 Laura Lindsay Barbara Zellmer  
 Liz Mangham  
 Ex-Officio: Tom Livesay  
 Emerita: Sue Turner

## Friends of LSU Museum of Art Board of Trustees

President: Nedra Sue Davis  
 Vice President: Susannah Bing  
 Secretary/Treasurer: Robert Bowsher  
 Norman Chenevert  
 Phillip Juban  
 Kay Martin

## Admission

Adults & Youths 13+: \$5  
 University Students with ID: Free  
 Children 12 & Under: Free  
 Museum Members: Free

## Hours

Tues – Sat: 10 am to 5 pm  
 Thurs: 10 am to 8 pm  
 Sun: 1 pm to 5 pm  
 First Sunday of the Month: Free  
 Closed Mondays, Thanksgiving Day,  
 Christmas Eve, Christmas Day  
 and All Major Holidays



## LSU Museum of Art Shaw Center for the Arts

100 Lafayette Street  
 Baton Rouge, LA 70801  
 225-389-7200 (general)  
 225-389-7210 (Museum Store)  
[www.lsumoa.com](http://www.lsumoa.com)

# MUSEUM STORE

100 Lafayette Street, Baton Rouge, LA 70801 | 225-389-7210

## LSU MOA Museum Store Artist Shawn Quincy Foreman

The LSU Museum of Art Museum Store would like to introduce Shawn Quincy Foreman. Foreman was born in 1973 to a military family; at a young age, he traveled to many European countries and experienced their different cultures. Shawn enlisted in the U.S. Navy in 1995 as a Corpsman (medic), traveling to Asia. After his tour of duty, he moved back to Baton Rouge and met his wife, Julie. Shawn received his Bachelor of Fine Arts degree in May 2006 and immediately enrolled in the Master of Fine Art, Studio Art program at Louisiana State University. In May 2009, he received his M.F.A. Using a variety of techniques, Shawn has been exploring new ways to create aesthetic experiences that spark awe.

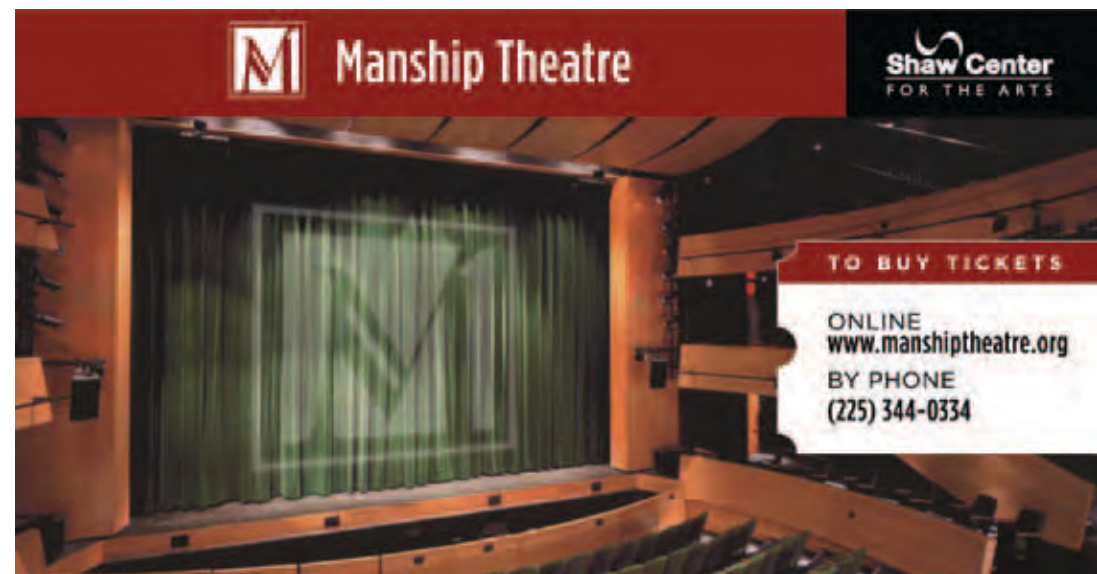


The Museum Store houses a broad selection of goods relating to our present exhibitions, as well as a bit of local flair. Whether you are looking for the latest work by your favorite local artist or a souvenir for the kids, the Museum Store has something to fit your needs. Please visit the LSU Museum of Art Museum Store to see Shawn Quincy Foreman's work, along with dozens more local Louisiana artists. You can always find that special gift and unique piece of art in the LSU Museum of Art Museum Store, located on the first floor of the Shaw Center for the Arts.

DON'T FORGET, members receive a **20% DISCOUNT** on all purchases.

## Christmas Trunk Show

Friday, December 2 from 10 am-8 pm.  
 Jewelry, pottery, woodworks, scarves and so much more.  
 Museum open 5-8 pm, Free Admission



Manship Theatre

Shaw Center FOR THE ARTS

TO BUY TICKETS

ONLINE  
[www.manshiptheatre.org](http://www.manshiptheatre.org)  
 BY PHONE  
 (225) 344-0334





LSU Museum of Art  
Shaw Center for the Arts  
100 Lafayette Street  
Baton Rouge, LA 70801

VISIT OUR

# MUSEUM STORE



FOR A SPECTACULAR SELECTION OF  
**GREAT GIFTS**  
FOR THE HOLIDAYS!

100 LAFAYETTE STREET, BATON ROUGE, LA 70801 | 225-389-7210