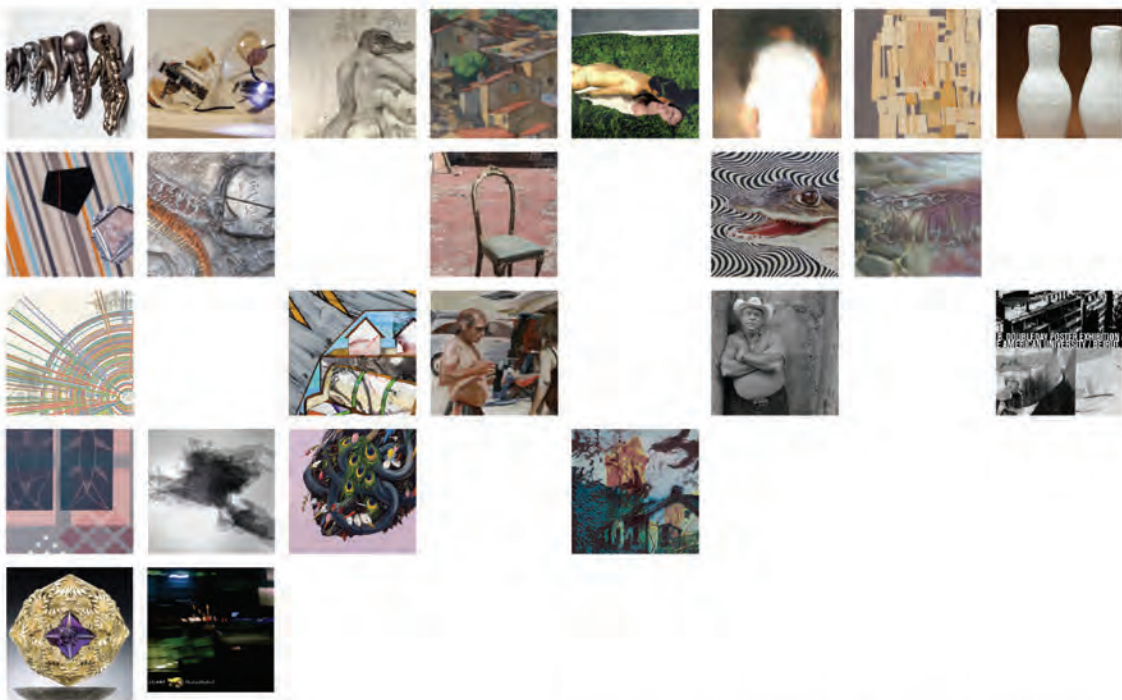


LSU Museum of Art

AT THE SHAW CENTER FOR THE ARTS
FIFTH FLOOR

Art Talk

WINTER
TWO-THOUSAND THIRTEEN



Page 4+
Exhibitions

Page 8
Interview with
George & Taylor Clark

Back Cover
Sonnier Sculpture
Unveiling & Reception

RIGHT HERE, NOW

www.lsumoa.org

November 8, 2013 – February 16, 2014

Dear Members & Friends



Dear Members & Friends,

I recently read an article lamenting the overuse of the term “to curate.” Writers these days are curating words and chefs are curating dinners. Curators, meanwhile, are left scratching their heads, wondering how this ancient term acquired such hipness.

The word “curate” comes from the Latin *curatus*—to care—which, in its original ecclesiastical context, referred to the care of souls. It’s a fitting metaphor for the role of a museum. The good curator respects the artist’s intention while always keeping in mind the quality of the viewer experience. Ideally, the two approaches coalesce to produce a meaningful exhibition. The artist Lesley Dill, for example, whose mixed-media works are now on view in the LSU Museum of Art’s galleries, originally asked that we exclude written texts from our walls to encourage a cerebral and visceral connection with her work. Upon further consideration, Dill eventually embraced interpretative labels on the walls to draw in and inform the viewer. Also in our galleries, *Portraiture: Style and Ornament* features four videos by Rashaad Newsome that play off of a number of Old Master works displayed with the videos. A visitor can choose to listen to the videos’ accompanying hip-hop music or simply absorb the bold imagery, which jumps off the screen in the quietude of the galleries.

In traditional curatorial practice, Newsome’s work would occupy either a gallery dedicated to contemporary art or a theater meant for viewing digital art. Instead, this artist, who is trained in art history, surrounded his work with eighteenth-

century British paintings and prints to emphasize the relationship between art, economics, social class, and race. It has become fashionable in contemporary museum parlance to deem certain curatorial approaches as “interventions.” Newsome’s videos intervene with the traditional modes of organizing and interpreting art history in a museum setting.

The advent of the intervention has not only given curators permission to break out of a formal mode of hanging and interpreting works, but also has allowed them to think longitudinally across centuries. That is, after all, why museums exist—as a way to contemplate someone else’s contemplations about the world as we compare our own time and place to eras and places past. When museums are considered more for the market value of their inventory than for their missions—as with the Detroit Institute of Art, whose world-class collection lies at the mercy of that bankrupt city’s governing officials—we become soulless. Curators can no longer perform the core functions of their job: to care for our souls and to challenge us with new ideas.

Sincerely,

Dr. Jordana Pomeroy

Executive Director
LSU Museum of Art

Thank You

Thank you to the following for their generous support of the Museum's exhibitions and programming:

Walter Anderson: Everything I See Is New and Strange

The Charles Lamar Family Fund
Louisiana Machinery
The Imo N. Brown Memorial Fund
Nedra Sue Davis & Nicole Pellitteri
An anonymous friend of the LSU
Museum of Art

Getting There

Leroy and Fran Harvey
Carriages Fine Clothiers
Baton Rouge Model Railroaders



Right Here, Now



Louisiana CAT

Louisiana Machinery, Co.
A grant from the Louisiana Division of the Arts, Office of Cultural Development, Department of Culture, Recreation and Tourism, in cooperation with the Louisiana State Arts Council, and as administered by Arts Council of Greater Baton Rouge funded also in part by the National Endowment for the Arts
Nadine Carter Russell
Mr. & Mrs. Robert Galantucci
Taryn Couvillion

Corporate Members

ABMB Engineers, Inc.
Ann Connelly Fine Art, LLC
Louisiana Culinary Institute
Taylor Clark Gallery

Newsletter & Design Sponsor

K-fx2 Design In Motion

Special thanks to...

The Elegant Needle

The Elegant Needle, located at 545 St. Tammany Street in Mid-City Baton Rouge. For years owner Marian Pyle has encouraged her patrons to support the arts in our city by donating a percentage of their purchase to the LSU Museum of Art. We are so thankful to Marian for her support of the Museum!

CARRIAGES

Carriages Fine Clothiers, located in the courtyard at Bocage Village, donated a portion of sales of William Yeoward's crystal and books to the LSU Museum of Art during the designers visit to the store. Pam Petit's efforts raised more than \$1,500 for the upcoming exhibition, *Getting There*. Thank you to Pam and Carriages Fine Clothiers!



Thank you to Brew Ha-Ha's Gabby Loubiere, who graciously donated her famous cake balls for author Peggy Sweeney-McDonald's book signing of *Meanwhile Back at Café DuMonde...* at our Museum Store!



Thanks again to Caryn Roland and Heirloom Cuisine for their in-kind sponsorship of our Event Planners Luncheon and for their ongoing partnership!

The Donner-Peltier Distillers will offer members a fabulous rum tasting and food pairing experience on January 30, here at the Museum. This is not to be missed! See our calendar for more details and our website closer to the event for how to purchase tickets!



Thanks to our new partner Sunshine Cleaners and Donny Moore for their generous support in keeping the linens for our events clean and crisp!

Thanks to our partners at these restaurants, Date Night is back! The Museum will offer free admission every Thursday from 5 – 8 pm, and visitors who show their Museum admission sticker at these restaurants will enjoy extended Happy Hour prices all night long!



Carolyn & Henson Moore, Fran & Leroy Harvey and Susan & Emile Rolfs...

Embody just what it means to be a friend to the LSU Museum of Art. These gracious couples made our 2013 Endowment Society Party Soirée a smashing success and we cannot thank them enough! Special thanks to Katherine Boyce and Portofino Papers for printing our most lovely Endowment Society Soirée invitations!

Special thanks to our friend George Clark of Taylor Clark Gallery for another year's subscription to artnet.com!

The LSU Museum of Art relies on businesses, individuals and foundations to bring you the quality exhibitions and programming that enhance our community. To explore ways you can support your Museum, please contact Fairleigh Cook Jackson, Director of Museum Advancement, at fairleigh@lsu.edu or 225-389-7212.

Exhibitions

On view through February 16, 2014

University art faculty members are not only educators, but also working artists. *Right Here, Now* provides a special opportunity to see the quality and variety of art created by LSU's School of Art professors, associate professors, and assistant professors. The exhibition features more than 100 artworks by 24 current faculty-artists in the School of Art's eight studio areas: photography, painting and drawing, printmaking, graphic design, foundations, sculpture, ceramics, and digital media. A full-color exhibition catalogue is available in the Museum Store.

LSU's School of Art professors are a dedicated and accomplished group. Many of them are award-winning faculty-artists who have exhibited nationally and internationally, including recent and upcoming shows in California, Colorado, Florida, Michigan, New York, Texas, Ireland, and China. *Right Here, Now* offers local viewers an opportunity to experience the artworks of those who are instructing and inspiring future artists right here in the Capital City.

As educators, LSU's School of Art faculty must carefully balance the roles of curriculum development and classroom teaching with artistic exploration and creative activity. The resulting works are altogether stunning and challenging. This group exhibition represents the breadth and scope of contemporary art practice and speaks to the wide-ranging talents of these individuals and their commitment to their various fields of art.



Kelli Scott Kelley, *Fleeing the Storm*, 2013. Charcoal and acrylic on repurposed paper. Image courtesy of the artist.



Kristine Thompson, *With Ana Mendieta*, 2008. Chromogenic print. Image courtesy of the artist.



Paul Dean, *Indra's Net (A Dreamcatcher)*, 2013. Framed collage. Image courtesy of the artist.



Scott Andresen, *Untitled*, 2012. Fabric, adhesive, tin, and screws. Image courtesy of the artist.



Frederick Ostrenko, *Orbs #1, #2, #3*, 2010. Glass, cork, microcontroller, LED, and wires. Image courtesy of the artist.

Right Here, Now



Denyce Celentano, *Everyone at the Beach Drives the Same Car*, 2013. Oil on canvas. Image courtesy of the artist.



Frederick Ortner, *Valmiletta*, 2009. Oil on canvas. Image courtesy of the artist. On loan from the Boisvert Gallery, Baton Rouge.

Right Here, Now was made possible in part by Louisiana Machinery, Co. and a grant from the Louisiana Division of the Arts, Office of Cultural Development, Department of Culture, Recreation and Tourism, in cooperation with the Louisiana State Arts Council, and as administered by Arts Council of Greater Baton Rouge funded also in part by the National Endowment for the Arts, Nadine Carter Russell, Mr. & Mrs. Robert Galantucci, and Taryn Couvillion.

Shaw Center for the Arts Partner Alfred C. Glassell Jr. Exhibition Gallery, First Floor

October 29 – December 8

Haejung Lee and Eunjung Shin: Messages from the Other Side Ceramics

Reception: Thursday, October 31, 6 – 8 p.m.

December 12 - 20

MFA Thesis Show: Rusty Durio

Reception: Saturday, December 14, 6 – 8 p.m.

January 25 – March 9, 2014

8 Fluid Ounces National Invitational Ceramic Cup Show 2014

Guest Curator: Mark Cole

Reception: Thursday, February 20, 6 – 8 p.m.

For more info contact Malia Krolak, Director, LSU School of Art Galleries, at 225-389-7180; artgallery@lsu.edu.

Currently on View

Getting There

On view through March 16, 2014

Whether traveling by car, plane, or train, taking a trip often seems to be all about the destination. *But what about the journey?* This season the LSU Museum of Art explores the nostalgia of holiday travel with the exhibition *Getting There*. Travel enthusiasts will delight in this year's holiday exhibition, which features leisure, vacation, voyage, and far-off lands. By showcasing a series of paintings, photographs, and vintage and antique toys, this exhibition reminds us that sometimes the joy of the holiday season is all about the journey.

Drawn from the Museum's collection, *Getting There* features antique and vintage toys that were inspired by travel and exploration. For many people, the Dinky Toys diecast model "Woodie" Plymouth station wagon (c. 1950–1960) will bring back memories of cross-country travel and family vacations. And no holiday toy display would be complete without a model train. This year the Greater Baton Rouge Model Railroaders organized the model train exhibit, which captures the grandeur of rail travel. This travel-themed exhibition also showcases objects of fine art, including photographs by train enthusiast and retired train supervisor Forrest Becht, as well as rare objects of interest, such as the 1836 publication of *Mitchell's Traveller's Guide through the United States*, an illustrated guide to the major roads and steamboat and canal routes of the United States.

Grab your guidebook and camera and make new memories en route to your holiday destination.



Helm Brothers Toys (est. New York, 1946), *Clockwork Locomotive with Shed*, c. 1948. Tinplate and lead. Gift of Mrs. Joseph S. Simmons, 95.15.19



Dinky Toys, Meccano Ltd. (est. England, 1931), *Model Plymouth Station Wagon, "Woodie,"* c. 1950–60. Zinc and rubber. Gift of Dr. Frank de Caro in memory of his mother, Beatrice Mulvehill de Caro, 93.26.2

This exhibition made possible by Fran & Leroy Harvey, Carriages Fine Clothiers and the Greater Baton Rouge Model Railroaders.



I Gave My Whole Life to Words: Lesley Dill

On view through January 19, 2014

Language has been Lesley Dill's inspiration, subject, and medium for the past twenty years. As an interdisciplinary artist, Dill's work ranges from sculpture, printmaking, photography, community-based art projects, and performance to recent operatic performances that combine artistic media. Dill's working process is extremely labor-intensive and time-consuming. Ultimately, however, Dill works with an immaterial medium— words. In the exhibition *I Gave My Whole Life to Words*, Dill explores the power and transcendent possibilities of words, capturing the sound, emotional force, and tempo of poetry in visual terms. Thematically, her work explores the fragility of existence, the strength of human spirit, and the relationship between body and soul.



Lesley Dill (b. 1950, New York), *Voice II*, 2002. Chiri paper and glue. On loan from Arthur Roger Gallery. Image courtesy of Arthur Roger Gallery. Photo: Mike Smith.

Currently on View

Rashaad Newsome

On view through January 19, 2014

SWAG THE MIX TAPE VOL. 1 is a series of videos and mix tapes that includes original music and visual graphics produced by New Orleans native Rashaad Newsome, in collaboration with an array of visual and recording artists, including Stefanos Koroneos, Kevin Jourdan, Zion Prodigy, Laurie Anderson, and Maluca Mala, among many others. In an installation called *Portraiture: Style and Ornament*, the LSU Museum of Art features *Swag* alongside seventeenth- and eighteenth-century portraits from the LSU Museum of Art's early collection. The proximity of the Museum's traditional portraits to Newsome's multi-sample mix tape videos puts a contemporary spin on questions about wealth, style, and class.



Rashaad Newsome (b. 1979, New Orleans, LA), *Devices*, 2011. Single channel video, 3:30 min. On loan from the artist. © Marlborough Gallery, Rashaad Newsome.

Opening Soon

Rooted Communities

Opening February 7, 2014

Rooted Communities features twenty-two sculptures, works on paper, and mixed-media installations by Jamaican-born artist Nari Ward. The exhibition will be on view from February 7 through August 10, 2014. Based in New York, Ward explores controversial issues surrounding citizenship, cultural consumption, discrimination, race, and poverty. His powerful yet delicate works reveal his profound respect for the process of making art, which can transform the mundane and unattractive into something of great beauty. Ward is the recipient of the Nadine Carter Russell Endowed Chair, a rotating residency in the LSU College of Art+Design.



Nari Ward (b. 1963, Jamaica), *Hanging Lights, Cotton Flames*, 2010. On loan from the Lehmann Maupin Gallery, New York.



Claude Clark (American, 1915–2001), *Jam Session*, 1943. Oil on canvas. On loan from the Philadelphia Museum of Art. Purchased with the Julius Bloch Memorial Fund, created by Benjamin D. Bernstein, 1998.

The Visual Blues

Opening March 8, 2014

The scholar Alain Locke coined the term “Harlem Renaissance” after editing his anthology *The New Negro* (1925). The term was eventually applied to a broad, interdisciplinary cultural movement that incorporated music, poetry, and visual art—a movement that took place in many major cities throughout the northern United States. In *The Visual Blues*, the Harlem Renaissance is interpreted from the perspective of its

southern roots in blues and jazz music. This exhibition offers a new view of the vibrant cultural exchange that took place at a pivotal moment in American history, one that demanded balancing tradition with assimilation as artists developed a new, music-inflected language.

George and Taylor Clark



A Conversation among Fran Huber of the LSU Museum of Art, and George and Taylor Clark of Taylor Clark Gallery

You have been in business for three generations. Who opened the gallery?

TC: My family bought Kidds Paint and Glass Co. on Laurel Street around 1950 and operated downtown. Framing was a sideline to the paint and wallpaper business. When I came into the business, downtown was starting to drift down everyone was moving away. My family had this lot here on Government Street. So we moved down here in 1960. The name changed then, fifty-three years ago.

Is that when you became a gallery?

TC: It all changed when we got a set of original Audubon prints in the mid-'60s. There was such demand nationwide, and our business changed. That's when we got rid of paint and wallpaper and became a gallery. We focused on Audubons, which led to William Walkers and other paintings.

Were you interested in art before you acquired the Audubons?

TC: I learned by trial and error. There was nobody to teach me; basically, I guess I just had a gift for it. If people were interested in the artwork we found, we'd keep it. We started doing business nationwide. We worked on an international scale, but especially national. And that's how it started, with the Audubons.

I was very fortunate because I was young

compared to a lot of my clients at the time. We had some people I would consider mentors: Doug Manship, Bert Turner, E. L. McIlhenny, Mr. Bill Groves in New Orleans, it just goes on and on.

What would be your advice to a new collector?

GC: Buy what you like. There are a lot of great Louisiana artists out there. I think some of them will go on to be very well known, but some of their works may be inaccessible to someone starting out as a collector. Education is part of the process. We tell people, "Just look, visit museums, visit galleries." The more you start to learn about something, the more you appreciate it.

TC: Some people deal with art like they're dealing with stocks. It's a bit of a dangerous game, you know, because the artists' works do fluctuate in value. If you can figure these dips and curves you can do well, but you can't always do that.

How do you think the art scene in Baton Rouge has changed over the years?

GC: I think it's getting much better. I think that with the population growth here, people are bringing an art sensibility. Having the Museum downtown is a great anchor for the community. We're here in Mid-City, which is becoming more of an arts district, and that's exciting for us. There was a time when Mid-City wasn't as vibrant, but it seems to really be coming back in a very positive way, with all of these arts districts around the city. And with a lot of new talent coming, I think the future looks really good for Baton Rouge.

Charitable Gift Annuities

Are you aware that the LSU Foundation offers Charitable Gift Annuities (CGA)? Do you know what a CGA is and the benefits it offers?

Most agree that it meets one's financial and charitable goals at the same time. While it offers lifetime income, after your death the remainder goes to the LSU Museum of Art. Those 70 and over receive the highest interest rate as they are based on actuarial tables. If you choose to use proceeds from stock, you bypass capital gains. Either way you will receive a large tax donation the year you make the gift, and the quarterly payments also include non-taxable income.

Another benefit is that with the issuance of the CGA you become a member of the prestigious 1860 Society. This group includes everyone who has left an estate gift to the LSU Foundation on behalf of the LSU Museum of Art. You will receive a tag for special parking on the campus, although it doesn't work for sporting events. If you have a meeting on campus or want to visit the library, it will get you through the gates to give you greater access to closer parking.

If you and another person would like a free proposal from the LSU Foundation's Planned Giving office, please call 225-615-8914 or 1-800-452-7928. They may be issued for one or two individuals and you do not need to be related.

Consider a CGA, consider supporting the LSU Museum of Art in your planned giving.

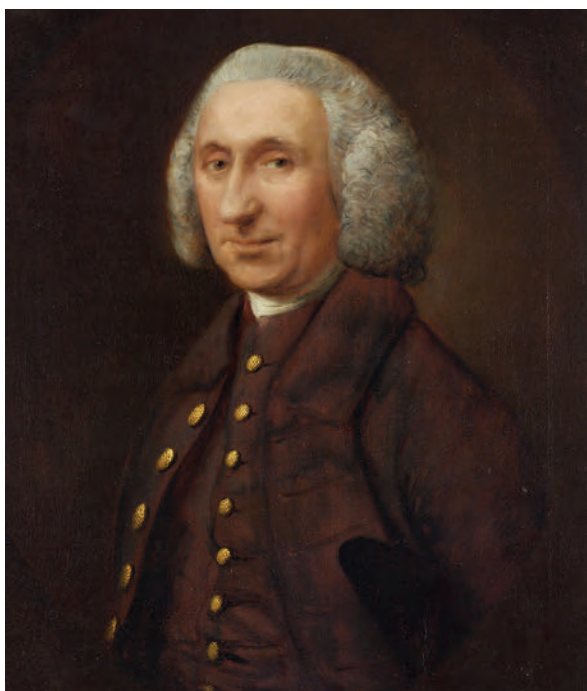
Adopt a Work of Art

The LSU Museum of Art is pleased to announce the second year of our successful Adopt a Work of Art program, which funds top-priority conservation treatments for works in the Museum's collection. The sponsor of a conservation treatment has the opportunity to follow the conservation progress through written reports, behind-the-scenes photos, and before-and-after photos. The sponsor will receive a certificate and their name will appear on the label whenever the Museum displays the work.

Last year, nine paintings were adopted and conserved. This year, a selection of paintings, frames, furniture, metal objects, and works on paper are available for adoption.

For a full list of works and for more information about the Adopt a Work of Art program, contact Tanya Anderson at 225-389-7215; tander3@lsu.edu. Information is also available online; click on The Collection at www.lsumoa.org.

Please consider making a difference to all those who visit the LSU Museum of Art by adopting a work of art.



Thomas Gainsborough (British, 1727–1788) *Portrait of Ralph Leycester of Toft Hall, Knutsford*, c. 1762. Oil on canvas. 30 x 25 inches. Anonymous Donor's Purchase Fund, 59.10.2. Photograph by David Humphreys.

2013 Endowment Society Soirée

A very special thank you to the hosts of this year's Endowment Society Soirée: Fran & Leroy Harvey and Carolyn & Henson Moore. The party celebrated the Museum's dedicated supporters who contribute to our Program Endowment. Guests enjoyed great company and cuisine at the Moores' lovely home. Thank you to Emile Rolfs who served as this year's Endowment Society Committee Chair. Do you need to make your contribution? Contact Fairleigh Cook Jackson for simple instructions on joining on-line or through the mail: fairleigh@lsu.edu.



Staff News



Fairleigh Cook Jackson
Director of Museum Advancement

Fairleigh Cook Jackson, our Director of Museum Advancement, has received a full scholarship to obtain her certification in Creative Placemaking from Ohio State University. The year-long certification course consists of online deep-learning modules, entrepreneurial leadership sessions, and case-study work focused on integrating community, economic, and cultural development. Jackson has acted as Deputy Coach in a Creative Placemaking process for the City of Mandeville for the past several months through the Louisiana Creative Communities Initiative, a pilot program of the Office of the Lieutenant Governor. She also serves on the committee for Create Mid-City in Baton Rouge. “A community’s success is linked directly to recognizing, leveraging, and connecting its assets,” Jackson says, “and Louisiana is home to thriving communities. This certification will further my abilities to be an effective advocate for arts and culture in our state.”



Cassandra Dillon
Student Intern

Cassandra Dillon is a native of Ocean Springs, Mississippi, and joined LSU Museum of Arts staff as the Social Media Coordinator. She is a senior at LSU pursuing a Bachelor of Arts degree in anthropology with a concentration in cultural studies and a minor in religious studies. Cassandra previously worked at the LSU Student Union Art Gallery for a year as the communications coordinator, where she handled the gallery’s public-relations efforts, including writing press releases, writing copy for advertisements, and managing marketing schedules for exhibits and competitions. She also did curatorial research and wrote descriptive labels for the Native American artifacts in the *A Slice of Life in South Louisiana* exhibition in spring 2013. She is excited about the opportunity to join the Museum’s team, which enables her to continue to gain experience in the arts industry at the university she loves, while expanding her communications skills and gaining knowledge of museum development.



Kymomeshe Powell
Senior at Mentorship Academy

Kymomeshe Powell is a senior at Mentorship Academy. Meshe was a teen mentor for the LSU Museum of Art’s Neighborhood Arts Project and spent her fall internship in the Education Department designing curriculum, prepping materials, and assisting with programs. Born in Plaquemine, Louisiana, Meshe moved to Baton Rouge when she was five. Inspired by art at an early age, she taught herself to draw. Today, Meshe is an accomplished artist who continues to hone her skills and plans to attend Louisiana Tech University for a degree in fine arts, English and digital animation. Meshe’s experiences at the LSU Museum of Art have given her confidence as a teacher and taught her that children, adults and art come in a variety of styles. She explains: “Being exposed to people from different backgrounds not only lets you get to know them better, but provides opportunities to learn from them and their experiences.”

The LSU Museum of Art depends on volunteers to help fill the gaps. The new education department is in NEED of enthusiastic volunteers to assist with school and family programs. We will train you! Prior experience with children, teaching, art and the wonder of museums is a plus. If that is not for you, then there are ample opportunities to serve as museum store clerks, gallery attendants or assist with research, exhibition installation, public relations, events, and general office work. Consider volunteering your time. It is rewarding and fun. For more information, contact LeAnn Russo at 225-389-7211; lrusso@lsu.edu.



Be the first to know about upcoming events and exhibitions, meet new people, and find other great networks! Follow the LSU Museum of Art on Facebook, Twitter, and YouTube.

Education In The Galleries



This fall, two new education programs aim to integrate the LSU Museum of Art more closely into the larger Baton Rouge community. Using our diverse collection and dynamic exhibitions as teaching tools, these programs inspire learning on a deep level. ArtWorks brings White Hills Elementary School pre-K, kindergarten and first-grade students to the Museum monthly throughout the school year to look at, talk about, and begin to consider critically original art objects as primary-source documents of history and culture. Over 100 students and teachers participate in this program, which includes a hands-on art component to strengthen learning and explore creative thinking and doing. The goal of ArtWorks is to add a grade each year in order to track students' academic success as they progress through school. This is the first program of its kind in Baton Rouge!

Our second program, MUSE, is a monthly class designed for homeschoolers. In September, over twenty-four children and their family members were introduced to the LSU Museum of Art, following a curriculum very similar to that designed for ArtWorks. Both programs use original artwork as a starting point to learn about history, art making, society, politics, creativity, and human nature.

We are seeking funding for the ArtWorks program, which costs less than \$500 a month. We are also seeking funding to establish a need-based scholarship fund so that MUSE and our other fee-based programs are accessible to everyone in our community. For more information on how you can help, please contact Fairleigh Cook Jackson, fairleigh@lsu.edu.

Introducing the LSU Museum of Art's Travel Diary!

The LSU Museum of Art invites you to explore a world of art beyond our galleries by joining us on various arts-related adventures.

Coming soon....



Delacroix and the Matter of Finish at the Birmingham Museum of Art, February 2014

Take a trip with the LSU Museum of Art to attend the opening reception of a groundbreaking exhibition

celebrating the master of French Romanticism, Eugène Delacroix (1798–1863). This overnight trip will also feature behind-the-scenes opportunities at the Birmingham Museum of Art.

A Visual and Performing Arts Extravaganza in New York City, May 2014

Join the LSU Museum of Art and the Manship Theatre on a spectacular springtime trip to New York.

Experience New York City's cultural offerings as you've never seen them before, with private tours and unique opportunities at museums and artist studios. Observe dance classes and rehearsals, artist and producer talks, and see live performances.

Watch for further information on our websites: www.lsumoa.org and www.manshiptheatre.org or call Fairleigh Cook Jackson at: 225-389-7212. She may be reached via email at fairleigh@lsu.edu

Membership

Student membership \$20

- one membership card with free admission to the Museum for one year available to any students currently enrolled in an accredited university or community college
- discounts at the Museum Store, local coffee houses, and local restaurants
- LSU MOA weekly e-blasts
- subscription to our quarterly newsletter, *ArtTalk*

(photocopy of student ID required with membership application)

**Please note our new Tiger Benefits: LSU faculty and staff receive 10% off all memberships at the Friend level and above.*

Friend \$50

- one membership card with free admission to the Museum for one year
- subscription to our quarterly newsletter, *ArtTalk*
- invitations to our members only opening receptions and annual meeting
- discounts on programs and special events
- Museum Store discount
- discounts at local restaurants and coffee houses

Family I \$75

- all Friend member benefits
- two membership cards with free admission for FOUR (two adults and two children under 18) to the Museum for one year

Family II \$ 100

- all Family I member benefits
- two membership cards with free admission for SIX (two adults and four children under 18) to the Museum for one year

Patron \$125

- all Family II member benefits
- reciprocal membership benefits at more than 600 museums with North American Reciprocal Museum Program (NARM)*

LSU MOA, Sustainer \$300

- all Patron member benefits
- four guest passes
- an invitation to a behind-the-scenes tour of the Museum and the permanent collection

Benefactor \$500

- all Sustainer member benefits
- invitations to exclusive tours of local artists' studios

Endowment Society \$1,000

- all Benefactor benefits
- special invitation to annual Endowment Society Social
- exclusive invitations to exhibition socials with the Director

Lifetime Endowment Society \$1,000 annually (commitment of 10 years)

- Endowment Society benefits
- name(s) inscribed on the Lifetime Endowment Society plaques in the Museum

Director's Circle \$5,000 & above

- Endowment Society benefits
- complimentary copies of museum exhibition publications
- exclusive invitations from the Director
- invitation to accompany the Director and other Director's Circle members on an exclusive arts adventure of travel and behind-the-scenes tours and visits to galleries and museums outside of our community

Corporate Partnerships

-The LSU Museum of Art welcomes and relies upon community business support. There are numerous opportunities for engagement: employee membership, educational programming underwriting, exhibition sponsorship, and many more. Partnerships may also include parking vouchers, private curatorial consultations, and dinner with the Provost. Please contact the Director of Museum Advancement, Fairleigh Jackson, for more information on Corporate Partnerships: 225-389-7212.

Remember the LSU Museum of Art

One of the simplest ways to provide for the future of the LSU Museum of Art is to remember us in your estate planning. If you are interested in planned giving for the Museum, please contact Fairleigh Cook Jackson at 225-389-7212 or fairleigh@lsu.edu.

Thank You

Local businesses value LSU Museum of Art members too!

Special thanks to our local business partners who offer **BENEFITS** to our members:

- Capital City Grill
- CC's Coffee Houses
- Lokka Med Spa
- PJ's Coffee House, Shaw Center for the Arts
- Stroubes Seafood & Steaks
- Tsunami

For information on how you can support our membership program please contact

Fairleigh Cook Jackson:
fairleigh@lsu.edu
or 225-389-7212

Becoming a member has never been easier! Call the Museum Store at 225-389-7210 to join over the phone, or visit www.lsumoa.org and print and mail your membership.

**North American Reciprocal Membership Program (NARM) Additional benefits are awarded through the NARM program to LSU MOA members at the Patron level and above. At more than 200 participating NARM museums, members enjoy: -Free admission to the permanent collection at listed museums during their regular hours -free admission to special exhibitions when no special ticket is required -entry for one person per membership card (a total of 2 persons) -Museum Store discounts -Discounts on ticketed events offered to museum members.*

Programs

December

- 01 Free First Sunday**
Free Admission
Fifth Floor, 2 p.m.
Dr. Jordana Pomeroy discusses the role of the French Revolution in the foundation of the British National Gallery.
- 05 Lecture: Words in Art**
Free Admission,
Fifth Floor, 6 p.m.
LSU School of Art professors Lynne Baggett and Courtney Barr discuss how typography has inspired their artistic careers.
- 06 Keith Sonnier Sculpture Unveiling, 5 p.m.**
- 06 Museum Store Holiday Trunk Show**
10 a.m. – 8 p.m.
The gift that really counts—a LSU Museum of Art membership. Visit with local artists and shop for jewelry, pottery, prints, and paintings. Receive 25% off one item and free gift wrapping. Enjoy holiday refreshments.
- 06 Stories in Art**
Free Admission
Fifth Floor, 10:30 a.m.
A program for preschoolers, their families, and caregivers. Enjoy a story in the Museum followed by an art activity.

07 ALL ABOARD!!

Live train demonstration in conjunction with the holiday exhibition *Getting There* \$5 for children, \$10 for adults.
Third Floor, 10 a.m. – 12 noon
Join the Greater Baton Rouge Model Railroaders as they display and demonstrate a real live steam model locomotive. These models operate on steam just as the magnificent steam engines of the great age of railroading did a century ago. It's a fascinating display for train lovers of all ages. The demonstration will be followed by hands-on holiday art projects.

10 Gallery Reading with Poet Laureate Ava Haymon

Free to Museum Members; \$8 for non-members
Fifth Floor, 6 – 8 p.m.
Join Poet Laureate Ava Haymon for a reading in the galleries in honor of Emily Dickinson's birthday and in conjunction with *I Gave My Life to Words: Leslie Dill* exhibition.

14 Saturday Arts for Families: Handmade Journals

Free to Museum Members; \$3 for non-members
Fifth Floor, 10:30 a.m.
Become inspired by how artists across centuries and cultures honor words and then create your own journal, the perfect holiday gift!

19 MUSE, Art for Homeschoolers

Fifth Floor, 1 p.m.
An art enrichment program for children (6-12) and their families/caregivers. Call for information.

January

05 Gallery Talk – Language as Art

Free Admission
Fifth Floor, 2 p.m.
Poet Chancellor Xero Skidmore presents a dialogue between the art of the spoken word and the art of Lesley Dill.

10 Stories in Art

Free Admission
Fifth Floor, 10:30 a.m.
A program for preschoolers, their families, and caregivers. Enjoy a story in the Museum followed by an art activity.

11 Saturday Arts for Families: Color

Free to Museum Members; \$3 for non-members
Fifth Floor, 10:30 a.m.
Investigate how color works in art and then create a rainbow palette for your own painting.

16 MUSE, Art for Homeschoolers

Fifth Floor, 1 p.m.
An art enrichment program for children (6-12) and their families/caregivers. Call 225-389-7207 for more information.

16 Trick My Stiletto

\$20 for Museum Members; \$30 for non-members.
Third Floor, 6 – 8pm
Want to add some sass to your sexy stilettos? Join us as we use Rashaad Newsome's artwork to inspire a tricked-out pair. B.Y.O. SHOES, all bling and fashionable drinks provided. Last chance to see Rashaad Newsome. Call for information.

19 Last day to see Rashaad Newsome, *Portraiture: Style & Ornament*.

19 Last day to see Lesley Dill: *I Gave My Whole Life to Words*.

30 Louisiana-grown: From Sugarcane to Cocktails

Join LSU Alumni Beth Donner, part owner of Donner-Peltier Distillers for an evening of Louisiana-grown ingredients and distilled alcohol tastings and hors d'oeuvres parings. Taste the Rougaroux Rum and hear the tale of the Legend of the Rougaroux it's named after.

February

02 Discover the Collection: Docent Tour

Free Admission
Fifth Floor, 2 p.m.
Learn more about the LSU Museum of Art collection and exhibitions.

02 Gallery Talk - Right Here, Now

Free Admission
Fifth Floor, 2pm
Join artists Kelli Scott Kelly, Jackie Parker and Mickey Walsh as they discuss their art, influences and the topic of collaboration.

07 Stories in Art

Free Admission
Fifth Floor, 10:30 a.m.
A program for preschoolers, their families, and caregivers. Enjoy a story in the Museum followed by an art activity.

08 Saturday Arts for Families: Valentines Workshop

Free to Museum Members; \$3 for non-members
Third Floor, 10:30 a.m.
Valentines are a token of love, so what could be better than unique, heartfelt art-cards for the special people in your life? We provide beautiful materials. You provide the creativity to make keepsake cards for everyone on your list.

09 Looking at Louisiana Art

Free to Museum Members; \$5 for non-members
Third Floor, 2 p.m.
Art historian Claudia Kheel presents a behind-the-scenes lecture on nineteenth-century Louisiana Art.

14 Rooted Communities: *The Art of Nari Ward* opens to the public.

16 Last day to see *Right Here, Now*.

20 MUSE, Art for Homeschoolers

Fifth Floor, 1 p.m.
An art enrichment program for children (6-12) and their families/caregivers. Call 225-389-7207 for more information.

20 STUDIO MUSEUM – Painting 101

\$32 for Museum Members; \$40 for non-members.
Third Floor, 6 – 8pm
Create your own MUSEUM Inspired masterpiece. Join LSU student artist/instructors as they teach you the tricks of the trade, enjoy a selection of art-inspired drinks, and paint a unique canvas! Call for information.

the Art of Event Planning

Planning the perfect event is an art—and it all begins with your location. No other venue in the city offers the choice between a panoramic view of downtown and the Mississippi River or mingling among the region's finest works of art. The LSU Museum of Art offers a group of elegant yet functional settings for a variety of social, corporate, and nonprofit affairs. Our professional staff has hosted many wonderful events and will share a wealth of experience, creative expertise, and access to our premier vendor partners to ensure your event exceeds your expectations.

Magnificent spaces are available during the day and after normal business hours for guided tours, private evening events, and corporate galas, including receptions, meetings, and seated dinners. Let us give you a personal tour of the facilities to assist you in planning your event, please contact Reneé B. Payton at 225-389-7206; renee@lsu.edu.



LSU Museum of Art Staff

Dr. Jordana Pomeroy
Executive Director

Becky Abadie
Administrative Coordinator

Fairleigh Cook Jackson
Director of Museum Advancement

Fran Huber
Assistant Director for Collections Management

LeAnn Dusang
Museum Store Manager

Lucy Perera
Coordinator of School and Community Programs

Natalie Mault
Curator

Reneé B. Payton
Coordinator, Events & Marketing of Facility Rentals

Rodneyna M. Hart
Preparator

Tanya Anderson
Assistant Registrar

Board Members

Chair: Fran Harvey
Vice Chair: Jerry Fischer
Secretary/Treasurer: John Godbee

Emalie Boyce	Jeffery McLain
E. John Bullard	Kenneth Miles
George Clark	Gail O'Quin
Barbara Ann Eaton	Michael D. Robinson
Donna Fraiche	Emile Rolfs
Kelli Scott Kelley	Katherine Spaht
Sarah Kracke	Alkis Tsolakis
Liz Mangham	Barbara Zellmer
Marchita Mauck	

Honorary: Nadine Carter Russell
Ex-Officio: Jordana Pomeroy
Emerita: Sue Turner

Friends of LSU Museum of Art Board of Trustees

President: Nedra Sue Davis
Vice President: Susannah Bing
Secretary/Treasurer:
Robert Bowsher
Norman Chenevert
Phillip Juban

Admission

Adults & Youths 13+: \$5
University Faculty, Staff and
Students with ID: Free
Children 12 & Under: Free
Museum Members: Free

Museum Hours

Tues – Sat: 10 a.m. to 5 p.m.
Thurs: 10 a.m. to 8 p.m.
Sun: 1 p.m. to 5 p.m.
First Sunday of the Month: Free
Closed Mondays, Thanksgiving Day,
Christmas Eve, Christmas Day, New
Year's Day and All Major Holidays



Great Gift Ideas

Museum Store Hours

Tuesday – Saturday

12 noon – 8 p.m.

Sunday 1 p.m. – 5 p.m.

Light up your holidays with gifts from the LSU Museum Store!

The gift that really counts—an LSU Museum of Art Membership. Visit with local artists and shop for jewelry, pottery, prints, and paintings. Receive free gift wrapping. LSU Museum Store, located at 100 Lafayette St, first floor of the Shaw Center for the Arts. 225-389-7210 or lrucco@lsu.edu

River North Dance

C • H • I • C • A • G • O

FEBRUARY 12

M MANSHIP THEATRE
SHAW CENTER FOR THE ARTS



MANSHIP THEATRE 2013-2014 SEASON

THE SOUTH PARTS ARTS CENTER

THE MANSHIP FAMILY

COX 2 WBRZ abc

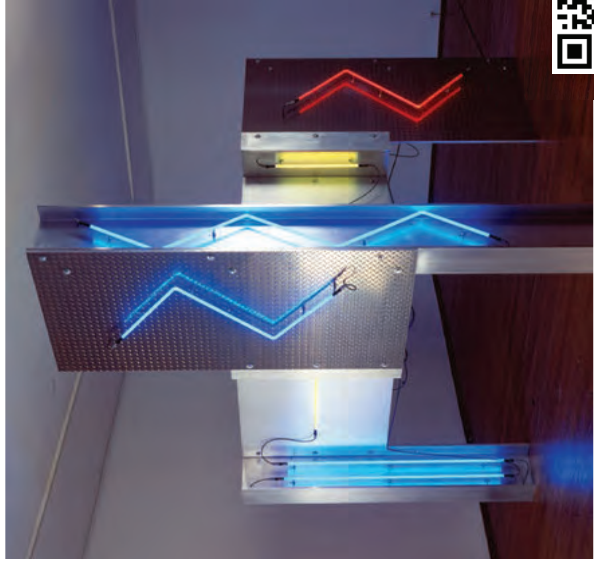
Blue Cross BlueShield of Louisiana

FOR TICKETS: MANSHIPTHEATRE.ORG 225-344-0334

LSU

Museum of Art

LSU Museum of Art
Fifth Floor
Shaw Center for the Arts
100 Lafayette Street
Baton Rouge, LA 70801



Keith Somnier, *Tetrapod Wall*, 1988, aluminum and neon.
Gift of the artist.

Come celebrate the acquisition of artist Keith Somnier's *Tetrapod Wall*. Somnier is an internationally renowned artist who hails from Mamou, but has made New York his home since the 1960s. His minimalist work harks back to his father's profession as the owner of a hardware store. Somnier's aesthetic shared elements of other minimalist artists who came of age after Abstract Expressionism, but his foundation lie in the simplicity of non-art materials.