

Art Talk

WINTER 2016

3-5 EXHIBITIONS

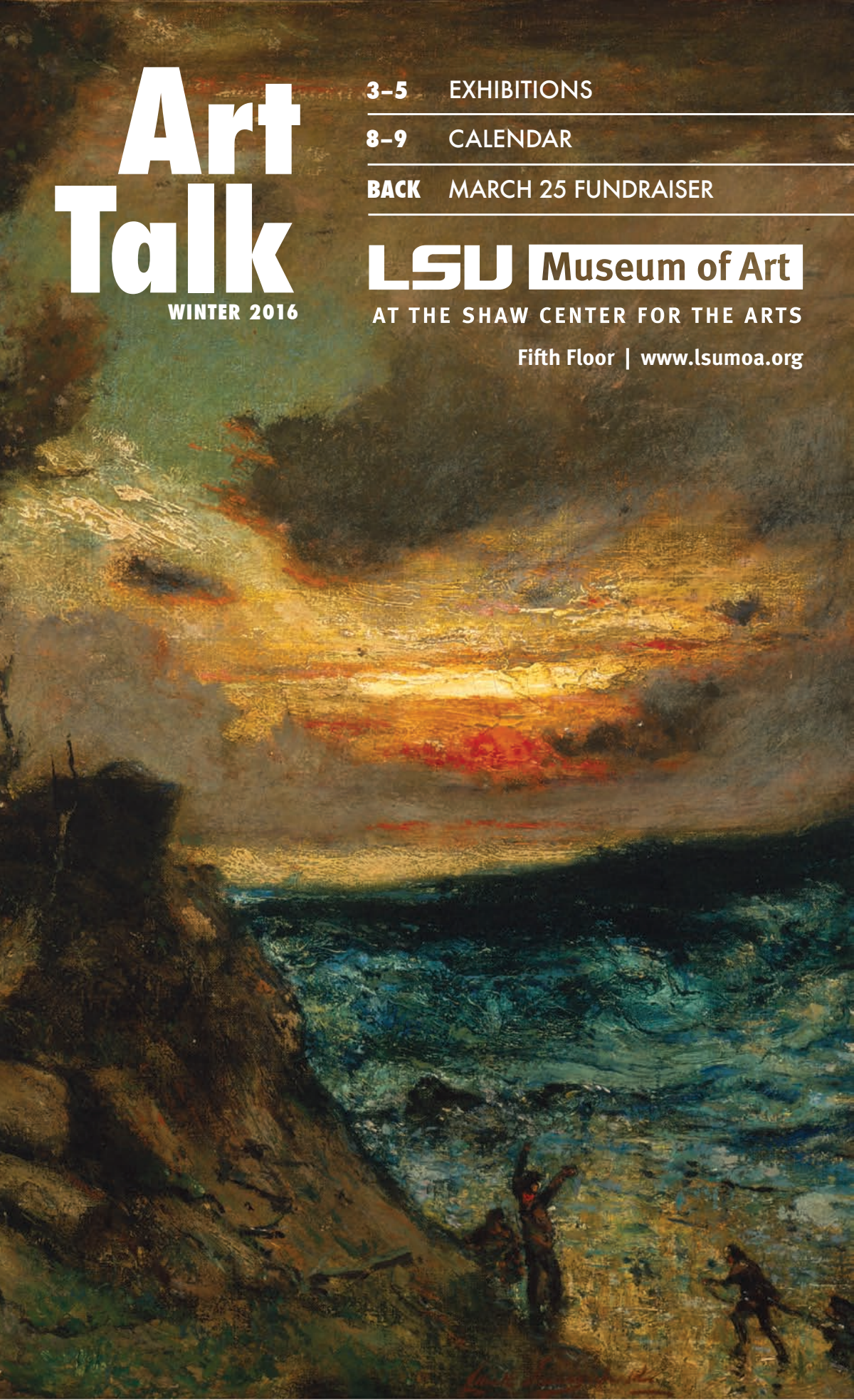
8-9 CALENDAR

BACK MARCH 25 FUNDRAISER

LSU Museum of Art

AT THE SHAW CENTER FOR THE ARTS

Fifth Floor | www.lsumoa.org





FROM THE DIRECTOR

We have a rare opportunity to look through someone else's eyes and envision the world anew in the exhibition, *Everlasting Calm: The Art of Elliott Daingerfield* (December 16, 2016–March 19, 2017). This time we travel to the late 19th and early 20th centuries with the paintings and drawings of the great North Carolina artist Elliott Daingerfield. Daingerfield talked about “spiritual vision” as something more than “merely imagination.” It is exciting to think of this enhanced level of art-making and intention as an inspiration and mandate to us as viewers to seek more in our looking; to seek more through our experience in the every day. Art transforms the mundane—it can capture the light and texture of our world as a new experience.

A focus on nature continues with a special exhibition of new paintings by the contemporary artist Julie Heffernan. *When the Water Rises: Recent Paintings by Julie Heffernan* (March 11–September 17, 2017) involves a visual discourse on the environment and our place in nature. Her curious works are densely textured, mysterious narratives and self-portraits offered to us to explore and reflect upon in a manner that borders on philosophy, environmentalism, and politics. Heffernan is a visiting artist with the LSU School of Art this spring, and this collaboration offers a unique opportunity to engage with an important contemporary creative talent. Through these two wonderful exhibitions, Daingerfield and Heffernan, we enjoy paintings of nature as metaphor and as images of specific and imagined places, while contrasting styles of the early 20th and the early 21st centuries.

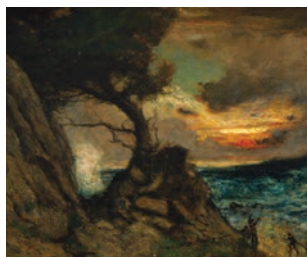
The Pennington Education Gallery is getting the first full gallery refresh since the inauguration of the *Art in Louisiana* project last March. The transportation theme travels through our collection in this fun gallery space for the young at heart of all ages. Individual works in other galleries continue to rotate to make gallery experiences worthy of your renewed exploration.

We hope you enjoy these new exhibitions and that you plan time to visit with your family and friends over the holidays and into the New Year. Many programs and social activities mentioned in this issue are designed for your enjoyment and involvement. We hope that you will make a visit to the Museum a priority.

All our best for the New Year!

A handwritten signature in black ink that reads "Daniel". The signature is stylized with a long horizontal stroke at the end.

Daniel E. Stetson
Executive Director



ON THE COVER: Elliott Daingerfield, *The Lone Cypress*, Circa 1914, Oil on canvas, Morris Museum of Art, Augusta, Georgia. Gift of the Robert Powell Coggins Art Trust.

Everlasting Calm: The Art Of Elliott Daingerfield

On view December 16, 2016–March 19, 2017

PROGRAMS

OPENING PREVIEW RECEPTION AND LECTURE BY J. RICHARD GRUBER, PHD

Thursday, December 15, 2016

Lecture, Third Floor, 6 p.m.

"Elliott Daingerfield: Art + Life, 1859–1932"

Reception, Fifth Floor, 7–8:30 p.m.

THIRD THURSDAYS: RIVER VIEW & VIBES

Featuring music inspired by Daingerfield era.

Thursday, February 16, 2017

6–8 p.m., Fifth Floor

NATIONAL ACADEMY OF DESIGN SERIES

\$20 for individual class; \$50 for entire series;

\$15 for museum members; \$45 for entire

series. All materials provided.

• Still Life in Pastel

Thursday, February 9, 2017, 6–8 p.m.

Fifth Floor

• Figure Drawing

Thursday, February 23, 2017, 6–8 p.m.

Fifth Floor

• Plein Air Painting

Sunday, March 5, 2017, 1:30–3:30 p.m.

Fifth Floor

BROWN BAG LUNCH

Daingerfield and Tonalism, with Curator

Courtney Taylor

First Wednesday, March 1, 2017, 12–1 p.m.,

Third Floor

Influenced by the French Barbizon School, Tonalists, and Symbolists, the work of Elliott Daingerfield seeks to evoke the divine manifest in nature. Daingerfield's work stands out among his National Academy of Design colleagues for its often distinctly southern mood. *Everlasting Calm* includes Daingerfield's oil paintings of southern scenes and monumental western landscapes as well as studies for these works.

Born in Harpers Ferry, Virginia, in 1859, Daingerfield moved to New York in 1880 for formal training. From 1886 to 1932, he maintained a studio in Blowing Rock, North Carolina, and in New York, where he shared space with fellow Academy member George Inness. From his studios in New York and North Carolina, Daingerfield contributed to the growing internationalism of American art as an artist, teacher, and writer.

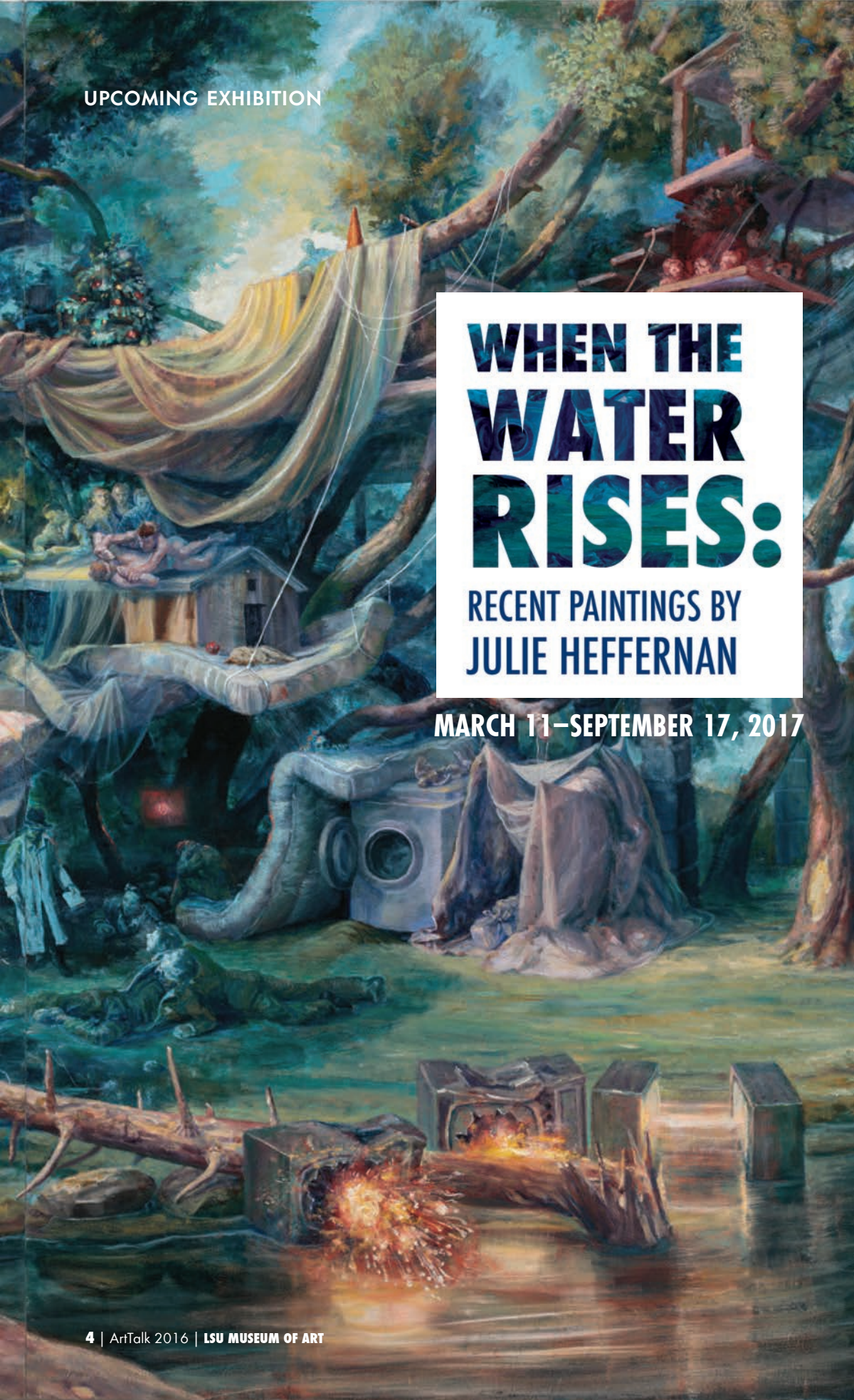
This retrospective exhibition is organized by the Morris Museum of Art, Augusta, Georgia. The exhibition will include over fifty works by Elliott Daingerfield as well as work by George Inness and Ralph Blakelock, contemporaries about whom Daingerfield published during the early twentieth century.

Special thanks to:

Taylor, Porter, Brooks & Phillips, L.L.P.

ABOVE: Elliott Daingerfield, *Sunset Glory*, circa 1915, oil on canvas, Morris Museum of Art, Augusta, Georgia.

UPCOMING EXHIBITION



WHEN THE WATER RISES:

RECENT PAINTINGS BY
JULIE HEFFERNAN

MARCH 11–SEPTEMBER 17, 2017

LSU Museum of Art

AT THE SHAW CENTER FOR THE ARTS

IN COLLABORATION WITH
LSU COLLEGE OF ART + DESIGN
AND LSU SCHOOL OF ART

EXHIBITION

Julie Heffernan's recent paintings create alternative habitats in response to environmental disaster and planetary excess. With waters rising, she imagines worlds in trees or on rafts in which undulating mattresses, tree boughs, and road signs guide the journey. Construction cones interrupt the landscape, signaling places to stop, enter tiny interior worlds, and reflect on the human condition — its feckless activity, violence, failure, and redemption. Heffernan tends these alternative environments, safeguarding bounties we cannot live without. In other moments, she names names and points fingers at those people and activities implicated in recent calamities of both the physical and sociopolitical environment. Intricately wrought, Heffernan's paintings evoke both the fantastical allegory of Bosch and the sublime landscapes of Thomas Cole and Albert Bierstadt.

COLLABORATION

This exhibition is a collaboration between the LSU College of Art + Design, the LSU School of Art, and the LSU Museum of Art. Julie Heffernan is visiting lecturer for the LSU School of Art. She will guide a gallery talk at the opening reception on Thursday, March 16, 2017, at 6:30 p.m. in the LA Machinery Gallery on the fifth floor of the LSU Museum of Art. Heffernan will give a lecture March 15, 2017, at 5:00 p.m. in the LSU Design Building, Room 103.

ARTIST

Julie Heffernan received her MFA in Painting from Yale University and a BFA from the University of California, Santa Cruz. Heffernan has received numerous grants, including an NEA, NYFA, and a Fulbright Fellowship. Her work is featured in the collections of the Brooklyn Museum of Art, the Virginia Museum of Fine Arts, and other major museums. She is represented by PPOW Gallery in New York, Catharine Clark in San Francisco, and Mark Moore in Los Angeles. Heffernan is a professor of fine arts at Montclair State University, New Jersey.

PROGRAMS

School of Art Lecture with Julie Heffernan

Wednesday, March 15, 2017, 5:00 p.m., LSU Design Building, Room 103

Exhibition Reception and Gallery Talk with Julie Heffernan

Thursday, March 16, 6–8 p.m., Fifth Floor, LSU Museum of Art
Gallery Talk with Julie Heffernan 6:30 p.m.



Julie Heffernan, *Camp Bedlam*,
2016, oil on canvas.

As we wrap up 2016 and look toward the New Year, we at the LSU Museum of Art are putting our heads together to make the Museum an even more dynamic space for learning. Our existing programs inform future programs, and we are always excited to uncover new possibilities and directions that better serve the needs of our community of learners—current and future.

EDUCATION NEWS!

In December we unveil a new installation in the Pennington Family Education Gallery, which will be fun for all ages. This fall, we celebrated program milestones: the fourth year of Stories in Art, the Neighborhood Arts Project, and ArtWorks, and the third year of MUSE. In December, Line 4 Line will be one!

Breaking down barriers and making the Museum accessible and relevant are fundamental aspects of our work. We have many audiences to consider, which means developing and adapting programs to serve needs rather than remaining static. Program growth is measured through attendance, as well as by creating opportunities for deeper long-term learning. In September, MUSE, LSU MOA's dedicated homeschool art program, outgrew its two monthly classes, so we added a third session to accommodate this growing audience. ArtWorks, our intensive Museum/school partnership, took on a new school, Capitol Elementary, and started offering a grade-level option to better serve the needs of teachers. Line 4 Line, our unique reading program that collaborates with local barber O'Neil Curtis, continued its steady expansion while also adding depth to its mission. In November, we kicked off a Line 4 Line book club, which provides books to participants to read during the month for discussion at the following program. Our plan is to keep building and tracking these young readers to demonstrate how a seemingly unlikely partnership can influence learning in ways that are truly meaningful.

Finally, after a whirlwind year of serving creatively over 4,000 youth, we are already planning for next summer's Neighborhood Arts Project. A new site is in the works, and we are connecting with new partners, including the Magnolia Peace Officers Association. These are just some of the ways LSU MOA is a vital part of our community. Come check us out, take part in our dynamic programs for adults and youth, and let us know what you think and what you would like to see.



NEW POSSIBILITIES
NEW DIRECTIONS



CALENDAR

DECEMBER

01 MUSE 1, Art for Homeschoolers

1 p.m., Fifth Floor
An art enrichment program for children (6–12) and their families/caregivers.
\$5; free to Museum members

02 Stories in Art: An Art Program for Very Young Children

10:30 a.m., Third Floor
Pennington Family Education Gallery
Free

02 Museum Store 12th Annual Holiday Trunk Show

11 a.m.–7 p.m.

03 Neighborhood Arts Project @ MY FEST LOUISIANA

12 noon–5 p.m.
North Blvd. Town Square
Free

04 Free First Sunday

1–5 p.m., Fifth Floor
Free family activities

05 Line 4 Line

4–7 p.m., O’Neil’s Barber & Beauty Salon
449 N. Acadian Thruway
Free haircuts for boys 3–11 yrs.
in exchange for reading a book

07 Brown Bag Lunch

On Nicole Charbonnet’s *Wonder Woman* with Curator Courtney Taylor
12 p.m., Third Floor
Free to Museum members or with Museum admission

08 MUSE 2, Art for Homeschoolers

1 p.m., Fifth Floor
An art enrichment program for children (6–12) and their families/caregivers.
\$5; free to Museum members

08 Holiday River View & Vibes

Join us in the galleries to hear the sounds of the holidays in collaboration with Magnolia Strings, enjoy refreshments provided by Capital City Grill, and a cash bar. 6–8 p.m., Fifth Floor
\$10 Museum members; \$15 non-members

15 MUSE 3, Art for Homeschoolers

1 p.m., Fifth Floor
An art enrichment program for children (6–12) and their families/caregivers.
\$5; free to Museum members

15 Elliott Daingerfield Opening Reception
6–8:30 p.m.

- Lecture by J. Richard Gruber, PhD
6–7 p.m., Third Floor
- Reception
7–8:30 p.m., Fifth Floor

\$10; \$5 LSU Students/Faculty and Staff
Free to Museum members and children

JANUARY

**02 Neighborhood Arts Project @
Gardere Initiative**

10–noon, 8435 Ned Ave.
A Free Holiday Art Camp

05 MUSE 1, Art for Homeschoolers

1 p.m., Fifth Floor
An art enrichment program for children (6–12)
and their families/caregivers.
\$5; free to Museum members

**06 Stories in Art: An Art Program for
Very Young Children**

10:30 a.m., Third Floor
Pennington Family Education Gallery
Free

09 Line 4 Line

4–7 p.m., O’Neil’s Barber & Beauty Salon
449 N. Acadian Thruway
Free haircuts for boys 3–11 yrs. in exchange for
reading a book

12 MUSE 2, Art for Homeschoolers

1 p.m., Fifth Floor
An art enrichment program for children (6–12)
and their families/caregivers.
\$5; free to Museum members

19 MUSE 3, Art for Homeschoolers

1 p.m., Fifth Floor
An art enrichment program for children (6–12)
and their families/caregivers.
\$5; free to Museum members

FEBRUARY

01 Brown Bag Lunch

African American Art with Curator,
Courtney Taylor, 12 p.m., Third Floor
Free to Museum members or with
Museum admission

02 MUSE 1, Art for Homeschoolers

1 p.m., Fifth Floor
An art enrichment program for children (6–12)
and their families/caregivers.
\$5; free to Museum members

**03 Stories in Art: An Art Program for
Very Young Children**

10:30 a.m., Third Floor
Pennington Family Education Gallery
Free

05 Free First Sunday

1–5 p.m., Fifth Floor
2 p.m. Lecture/Program–TBA
Free Museum Admission and Family Activities

06 Line 4 Line

4–7 p.m., O’Neil’s Barber & Beauty Salon
449 N. Acadian Thruway
Free haircuts for boys 3–11 yrs. in exchange for
reading a book

09 Art & Alzheimer’s

A program in partnership with Alzheimer’s
Services of the Capital Area designed for those
with memory impairment and their caregivers or
loved ones.
11 a.m.–12:30 p.m., Fifth Floor, Free
Call Dana Territo to sign up or for information:
225-236-4616

09 MUSE 2, Art for Homeschoolers

1 p.m., Fifth Floor
An art enrichment program for children (6–12)
and their families/caregivers.
\$5; free to Museum members

**09 National Academy of Design Series—
Still Life in Pastel**

6–8 p.m., Fifth Floor
\$20 for individual class; \$50 for entire series
\$15 for museum members; \$45 for entire series

12 We LOVE . . .

ArtWorks exhibition and reception featuring
students from White Hills Elementary, Park
Elementary, Bernard Terrace, and Capitol
Elementary. 2 p.m., Fifth Floor, Free

16 MUSE 3, Art for Homeschoolers

1 p.m., Fifth Floor
An art enrichment program for children (6–12)
and their families/caregivers.
\$5; free to Museum members

16 Third Thursdays: River View & Vibes

Join us in the galleries for music in honor of the
artist in our current exhibition *Everlasting Calm:
The Art of Elliott Daingerfield*. Stay downtown
after work to enjoy music, refreshments provided
by our building partner Capital City Grill, and
a cash bar. 6–8 p.m., Fifth Floor
\$10 Museum members; \$15 non-members

**23 National Academy of Design Series—
Figure Drawing**

6–8 p.m., Fifth Floor
\$20 for individual class; \$50 for entire series
\$15 for museum members; \$45 for entire series



THE LSU MUSEUM OF ART CONGRATULATES PATRONS

CHARLES "CHUCK" SCHWING AND DR. AND MRS. FREDERIC BILLINGS III

The Association of Fundraising Professionals (AFP) of Greater Baton Rouge honored Chuck Schwing with the *Outstanding Philanthropist* award at this year's National Philanthropy Day Luncheon on Tuesday, November 15. As a past board member and patron for over fifteen years, Chuck has made the success of the Museum his personal mission. We are grateful for his leadership and dedication to supporting Louisiana art and culture through our exhibitions and programming.

This year marks the thirtieth anniversary of membership in the LSU Museum of Art for Susan and Dr. Frederic T. Billings III. The Billings' ongoing commitment to the Museum has been exemplary. We would not be able to offer quality exhibits and programs such as *Hunt Slonem: Antebellum Pop!* and the Neighborhood Arts Project without the dedication and support of members like Susan and Frederic Billings.

Thank you, Chuck and Susan and Frederic, for all you do for the LSU Museum of Art. With friends like you, everyone in the Greater Baton Rouge area and beyond can benefit from all we offer as we grow to become the central hub of Louisiana art and culture in the city.

TOP: Chuck Schwing

BOTTOM: Dr. and Mrs. Frederic Billings, III

GIFT MEMBERSHIP: THE GIFT THAT CAN BE ENJOYED ALL YEAR LONG!

As we enter the season of giving, remember that a membership to the LSU Museum of Art is a meaningful way to share with loved ones some of the best cultural experiences Baton Rouge has to offer throughout the entire year.

FOR MORE INFORMATION ON MEMBERSHIP BENEFITS AND LEVELS:

- visit www.lsumoa.org
- contact Heather Nelson, Director of Development, at (225) 389-7212 or hnelson@lsufoundation.org

Benefits of membership include (but are not limited to):

- Free admission to the LSU MOA for one year.
- Subscription to our quarterly newsletter, Art Talk.
- Discounts on LSU MOA programs and events, as well as at selected downtown businesses.
- Invitations to members-only events.
- Reciprocal membership privileges at museums around the country.

WELCOME NEW MEMBERS

INVESTOR

Beth and Butler Fuller

FELLOW

Carol and Charles Lamar

BENEFACTOR

Laura and Wendell Lindsay

FRIEND

Eric Lewis
Trudy Smith
Cassie Trahan
Cynthia Watanabe
Ella Wheeler
Donnie Wilkinson

HOUSEHOLD

Tim Babcock
Sean Cresap
John Haynes
Blaine Pitre
Zaheer Poptani

CORPORATE MEMBERSHIP

Thank you to our current corporate investors:
 Stroubes Seafood & Steaks
 Taylor Clark Gallery

EXHIBITION SUPPORT

Support the museum through exhibition sponsorships

Sponsorship of an exhibition at the LSU Museum of Art is a creative answer to specific corporate marketing objectives. The Development Office works closely with each sponsor to tailor a benefits package that advances the sponsor's business objectives and enhances their profile in Baton Rouge. Your support of this core programming enables the Museum to produce quality exhibitions, providing inspiration for our public and educational programs.

The levels for Annual Exhibition Fund recognition are \$2,500, \$5,000, \$10,000, and \$25,000. The LSU Museum of Art will recognize your support of its 2016–17 exhibition season on all exhibition materials.

Individual exhibition sponsorships begin at \$1,000 with the title sponsorship ranging from \$25,000 to \$50,000, depending on the exhibition.

Annual Exhibition Fund support provided by:

The Imo N. Brown Memorial Fund in memory of Heidelberg Brown & Mary Ann Brown
 Louisiana CAT
 Taylor, Porter, Brooks & Phillips, L.L.P.

Benefits of exhibition sponsorship recognition

As a sponsor of one of the LSU Museum of Art's upcoming exhibitions, your company will receive recognition on exhibition-related materials, including:

- Title wall at exhibition entrance
- Museum's website, with link to sponsor's website
- All print and web advertisements
- All press releases that reference the exhibition, distributed to an international press list
- Invitations to the opening reception and all other related events
- Quarterly Calendar, distributed to over 1,000 members and visitors
- Acknowledgment in our Annual Report and any printed listing of the Museum's corporate contributors
- Opportunities for Clients and Employees
- Your company will also benefit from the corporate sponsorship through:
 - Invitations to the opening reception and membership events for the exhibition
 - Private tours of the exhibition with the director or curator
 - Private evening events during the run of the exhibition during non-public hours

- Free admission for all employees while the exhibition is on view
- Additional guest passes for client and employee use

For more information about the Annual Exhibition Fund or individual exhibition sponsorships, contact the Development Office at (225) 389-7212.

EXHIBITIONS AVAILABLE FOR SPONSORSHIP

Everlasting Calm: The Art of Elliott Daingerfield
 Organized by the Morris Museum of Art, Augusta, Ga.
 December 16, 2016–March 19, 2017

When the Water Rises: Recent Paintings by Julie Heffernan
 March 17–September 17, 2017

Contemporary Masters: Works on Paper from the Collection of the Art Museum of South Texas
 Organized by the Art Museum of South Texas, Corpus Christi
 April 7–July 9, 2017

Exploring Photography: Works from the Permanent Collection
 April 7–July 9, 2017

GRANT RECOGNITION

STABILIZATION GRANT

We are grateful to the Louisiana Division of the Arts for a Stabilization Grant to support the operations of the LSU Museum of Art for 2015–16. This grant is made possible by the Louisiana State Arts Council through the Division of the Arts, National Endowment for the Arts, and the Arts Council of Greater Baton Rouge.

LOCAL PROJECT ASSISTANCE GRANT

We are grateful to the Arts Council of Greater Baton Rouge for a Local Project Assistance Grant for the Neighborhood Arts Project. This grant is funded by the East Baton Rouge Parish Mayor-President and Metro Council.





Heather Nelson

HEATHER NELSON APPOINTED DIRECTOR OF DEVELOPMENT

The LSU Museum of Art is pleased to announce that Heather Nelson has accepted the position of Director of Development. Nelson began in this new position in September.

Heather earned her BA in Art History from Tulane University and has many years of versatile experience in fund development that includes the New Orleans Museum of Art and Young Audiences of Louisiana. As a native of New Orleans with a strong commitment to community development, Heather looks forward to serving as an advocate for arts and culture in the Greater Baton Rouge area.

We welcome Heather to the LSU Museum of Art!



Daniel Stetson, Museum Executive Director, presents award to Renee Bourgeois

RENEE' BOURGEOIS RECEIVES LAM 2016 SPECIAL SERVICE AWARDS

On September 12 at the LAM conference in Lafayette, Louisiana, Renee Bourgeois received the 2016 Louisiana Museum Career Professional Award, which recognizes a Louisiana museum professional in any discipline or specialty for commitment, exemplary and distinguished achievement, professionalism, and sustained contribution to the museum field.

Renee has been a dedicated professional at the LSU Museum of Art since 2005. She has held several positions, including Events & Public Relations Coordinator, Marketing Director, and Coordinator of Events & Marketing of Facility Rentals. Renee plays a key role in creating, organizing, and executing profitable special events and fundraisers. She also manages four facility rental spaces in the Shaw Center for the Arts. Her commitment and quality of work are visible through the growing success of the Museum and her programs.

Renee is critical to the success of our events and programs. Her relationship with repeat clients and numerous community partners, sustained over the past eleven years, is without doubt a benefit to the Museum and the community. This year she revitalized a ten-year-old fundraiser, exceeding expectations by netting ten times the amount raised last year. She is a member of Women in Media, the Baton Rouge Events Association, and Zeta Phi Beta Sorority, Inc., and serves on the executive board for all three of these professional organizations. She is very integrated in the community, and her networking with other professionals has proven to be an asset to the Museum. We congratulate Renee on this honor.

ALFRED C. GLASSELL JR. EXHIBITION GALLERY

First Floor



Stephen Westfall, *Demimonde*, Oil and alkyd on canvas,
30 x 30 inches, 2014

ON VIEW

**PAINTING COLOR:
ABSTRACT WORKS BY
STEPHEN ALEXANDER
SIRI BERG
GABRIELE EVERTZ
JANE LOGEMANN
ROBERT SWAIN
STEVEN WESTFALL
SANFORD WURMFELD**

Through January 6, 2017

Curated by Susan Bonfils
Sponsored by Nadine Carter
Russell In Memory of Paul A.
Dufour

MUDLUCIOUS

January 27 – March 5, 2017

Ceramic Art Exhibition
Curated by Christopher Scott
Brumfield and Andy Shaw.
Reception: Saturday, January 28,
2016, 6-8 p.m.

MANSHIP THEATRE

BECOME A MEMBER

AND ENJOY ALL THE POSSIBILITIES THAT
MANSHIP THEATRE HAS TO OFFER

- + PRIVATE ARTIST RECEPTIONS, REHEARSALS & SOUND CHECKS
- + KIDS CLUB & SUMMER THEATRE CAMP PERKS
- + ADVANCE PURCHASE PRIVILEGES TO ALL SEASON PERFORMANCES
- + DISCOUNTS AT AREA RESTAURANTS

Introducing
Manship Marquee Club

- + COMPRISED OF PLATINUM, PLATINUM STAR, PLATINUM CIRCLE, AND DIAMOND LEVELS
- + MARQUEE CLUB POLO SHIRT
- + EXCLUSIVE ACCESS TO MARQUEE CLUB DURING HEADLINER PERFORMANCES
- + ENJOY HORS D'OEUVRES AND A DRINK BEFORE PERFORMANCE AND DURING INTERMISSION

COX MANSHIP THEATRE WBRZ 2

MANSHIPTHEATRE.ORG (225) 344-0334

THE 12TH ANNUAL HOLIDAY TRUNK SHOW

FRIDAY, DECEMBER 2, 11 a.m.– 7 p.m.

Enjoy a fun day of shopping
Meet local Louisiana artists: painting,
jewelry, pottery, photography
FREE gift wrapping
Refreshments & cash bar
starting at 4 p.m.
Discounts for all

FEATURING: Ramon Reyes, Ramon Reyes Fine Art
Andre Moreau • Sally McConnell, Glazed and Confused Pottery
Mary Demarest, Right Brained Potter • Elizabeth Nelly
Dilek Buchholz • Sue Garner • Mimi Fowler • Terry Mook
Leigh Ann Spence, Abstract Art by Leigh Ann Josh Wascome
Clara Dartez, Design by Clara



Shop the LSU Museum Store for all your holiday needs

Glamorous gifts galore for all ages! You will find unique, one-of-a-kind items such as pottery, paintings, hand-blown glass, wood works, and lots of beautiful jewelry.

**Museum Memberships
make great holiday gifts
for everyone!**

FACILITY RENTALS



The Art of Event Planning

Magnificent spaces are available during the day and after normal business hours for guided tours, private evening events, and corporate galas, including wedding ceremonies and receptions, meetings, and seated dinners. Let us give you a personal tour of the facilities to assist you in planning your event!

Please contact **Reneé Bourgeois**
Tel: (225) 389-7206 | Email: renee@lsu.edu

SPECIAL THANKS
TO OUR PARTNERS

Visit BatonRouge.com



LSU MUSEUM OF ART STAFF

Daniel E. Stetson
Executive Director
Becky Abadie
Business Manager
Tanya Anderson
Assistant Registrar
Reneé Bourgeois
Coordinator, Events & Marketing of Facility Rentals
LeAnn Dusing
Museum Store Manager & Membership Coordinator
Fran Huber
Assistant Director for Collections Management
Brian Morfitt
Preparator
Heather Nelson
Director of Development
Lucy Perera
Coordinator of School and Community Programs
Brandi Simmons
Communications Coordinator
Courtney Taylor
Curator

BOARD MEMBERS 2016-2017

Chair: George Clark
Vice Chair: Brian Schneider
Secretary/Treasurer: John Godbee
Melissa Caruso
Jerry Ceppos
Nancy C. Dougherty
John Everett
Jerry Fischer
Beth Fuller
LouAnne Greenwald
Steven Heymsfield
Joyce Jackson
Ben Jeffers
William Judson
Chadwick Kenney-Possa
Ellen Kennon
Susanna Atkins McCarthy
Scott McKnight
Stephanie Possa
Katherine Spaht
Alkis Tsolakis
Ex Officio, Daniel E. Stetson
Honorary, Nadine Carter Russell
Emerita, Sue Turner

FRIENDS OF LSU MUSEUM OF ART BOARD OF TRUSTEES

President: Nedra Sue Davis
Vice President: Susannah Bing
Secretary/Treasurer: Robert Bowsher
Clarke Gernon
Leslie Gladney
Erin Stephens
Ann Wilkinson

ADMISSION

Museum Members: Free
Adults & Youths 13+: \$5
University Faculty, Staff, and Students
with ID: Free
Children 12 & Under: Free

MUSEUM HOURS

Tues.-Sat.: 10 a.m. to 5 p.m.
Thurs.: 10 a.m. to 8 p.m. Free admission after 5 p.m.
Sun.: 1 p.m. to 5 p.m.
First Sunday of the Month: Free
Closed Mondays, Thanksgiving Day, Christmas Eve,
Christmas Day, and Major Holidays



LSU Museum of Art
Fifth Floor
Shaw Center for the Arts
100 Lafayette Street
Baton Rouge, LA 70801



SAVE THE DATE

THE 12TH ANNUAL HOLIDAY TRUNK SHOW

FRIDAY, DECEMBER 2
11 a.m. - 7 p.m.

Enjoy a fun day of shopping
Meet local Louisiana artists

FREE gift wrapping
Refreshments & cash bar
starting at 4 p.m.
Discounts for all

FEATURING

Ramon Reyes
Ramon Reyes Fine Art

Andre Moreau

Sally McConnell
Glazed and Confused Pottery

Mary Demarest
Right Brained Potter

Elizabeth Nelly

Dilek Buchholz

Sue Garner

Leigh Ann Spence
Abstract Art by Leigh Ann

Josh Wascome

Mimi Fowler

Terry Mook

Clara Darteiz
Design by Clara

